



CONNECTING THE FUTURE

# MX

# POWER

CONNECTING THE FUTURE



# COMPANY PROFILE



"The future belongs to those who believe in the beauty of their dreams." MX MDR TECHNOLOGIES LTD which believes in the same having the Tagline "Connecting the Future". MX comes from creating Magic of Xcellence .

The Company was incorporated in **1978** by the very ambitious entrepreneur **Mr Mukesh V Panjwani**. MX is the Leading Manufacturer of electronics, a/v cables, electronic accessories, electrical & mechanized Products having the manufacturing unit in Vasai, Dist. Palghar, Maharashtra & Head office in Andheri, Mumbai India.

Since its establishment, MX has been providing special electrical and electronic solutions for Corporate Clients, Service Providers, System Integrators and OEM Manufacturers. MX has grown its Network of Distributors across India and is also exporting to Turkey, Nepal, Bangladesh, Middle East, Sri Lanka & South Africa.

"MX is not just a brand but heritage of trust, credibility & sustained value creation."

## MX COMPANY'S PRINCIPLES

BRAND PROMISE

SERVICE

QUALITY

DESIGN & INNOVATION

MAKE IN INDIA



**2023** a new vertical is established by the name of MX POWER

MX Power electrifies with electrical power & cable management systems for applications catering to Residential, Industrial, Institutional, Hospitality & Healthcare segments.



# TABLE OF CONTENT



CONNECTING THE FUTURE

Standard Power Tracks	03-05
Nuevo Modular Power Tracks	06-14
Freestanding Tower Tracks	15-20
Adapters & Multimedia	21-22
Desktop / Under Desk / Recess Consoles	23-36
Pop-Ups & Cable Cubby's	37-46
Power Posts	47-52
Access Flaps	53-56



## STANDARD POWER TRACK

- ◆ Child Safe
- ◆ Architectural Versatile
- ◆ Unique & Modular Designed
- ◆ Easy Installation
- ◆ Universal System
- ◆ Freedom of moment
- ◆ High current carrying capacity
- ◆ Fully Customizable
- ◆ Premium Power Receptacles

A brand truly made in India, MX Power Tracks are the world's most advanced power outlet system. This design is world's first-of-its kind electrical power outlet system which is practically safe and simply beautiful!

Our innovative track system allows you to add, remove and relocate power outlets anytime anywhere - by just a simple twist within the system.

Our extensive range of architecturally versatile tracks are designed for use in a wide range of applications - Residential use- kitchen, living room, study room, theater room, floor skirting's and many more.

Commercial use- office, hotels, hospitals, system furniture's, server rooms, display counters, test labs and manufacturing facilities.

# STANDARD POWER TRACK

MX standard on-surface & in-surface track offers a wall or dado mid height power solution perfect for office space, server rooms, display counters, kitchens, schools and many other shared space environments. It is designed for ultimate ease of use with free table top mounted solutions.

MX tracks can be customized to your requirements. We offer options voice / data modules like Cat 6, Cat 6a, Cat 6 shielded, audio video modules like HDMI, USB C, USB A 2.0 / 3.0, VGA, 3.5mm Stereo, Display Ports to suit all your multimedia connections.

- ◆ Wall mounted / Table mount
- ◆ Sleek & minimalistic
- ◆ Versatile & convenient
- ◆ Mounting brackets to change angle or fix to a wall
- ◆ Surface & Recess Models

## SPECIFICATION

### Electrical

Rated Voltage	: 250V~ Single-phase
Rated Current	: 32 Amps maximum
Frequency	: 50 / 60Hz
Terminal Capacity	: 1.25 mm <sup>2</sup> - 4 mm <sup>2</sup>

### Material

Track Housing	: Anodized Aluminum
End Cap	: Polycarbonate
Busbar Carrier	: Polycarbonate
Conductor	: Phosphor Bronze (Copper)

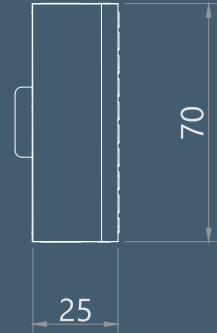
### Size

Standard Length	: 400mm-1500mm (refer table)
Customization	: Lengths & configuration available upon request



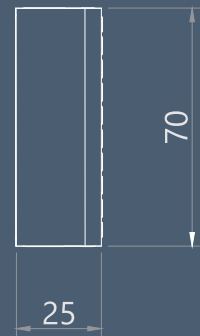
### MX SURFACE MOUNT TRACK WITH SWITCH

Article No.	Sizes	Dimensions
MX 6000	400mm	70 x 25
MX 6000A	600mm	70 x 25
MX 6000B	800mm	70 x 25
MX 6000C	1000mm	70 x 25
MX 6000D	1200mm	70 x 25
MX 6000E	1500mm	70 x 25



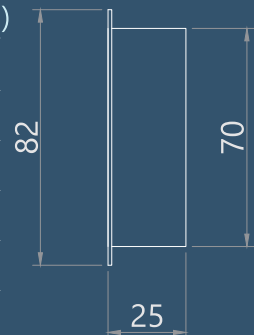
### MX SURFACE MOUNT TRACK WITHOUT SWITCH

Article No.	Sizes	Dimensions
MX 6100	400mm	70 x 25
MX 6100A	600mm	70 x 25
MX 6100B	800mm	70 x 25
MX 6100C	1000mm	70 x 25
MX 6100D	1200mm	70 x 25
MX 6100E	1500mm	70 x 25



### MX RECESS MOUNT TRACK

Article No.	Sizes	Cutout (mm)
MX 6200	400mm	390 x 71
MX 6200A	600mm	590 x 71
MX 6200B	800mm	790 x 71
MX 6200C	1000mm	990 x 71
MX 6200D	1200mm	1190 x 71
MX 6200E	1500mm	1490 x 71



To add multimedia ports (#P) # is for the number of ports, for example recess 600mm track with 3 ports, the article number would be **MX 6200A-3P**

For Color - add **SL** for Silver, **BK** for Black & **RG** for Rose Gold, for example recess 600m track with 3 port and color required is Silver, the article no. would be **MX 6200A-3P-SL**

# MX NUEVO



MODULAR  
POWER TRACK

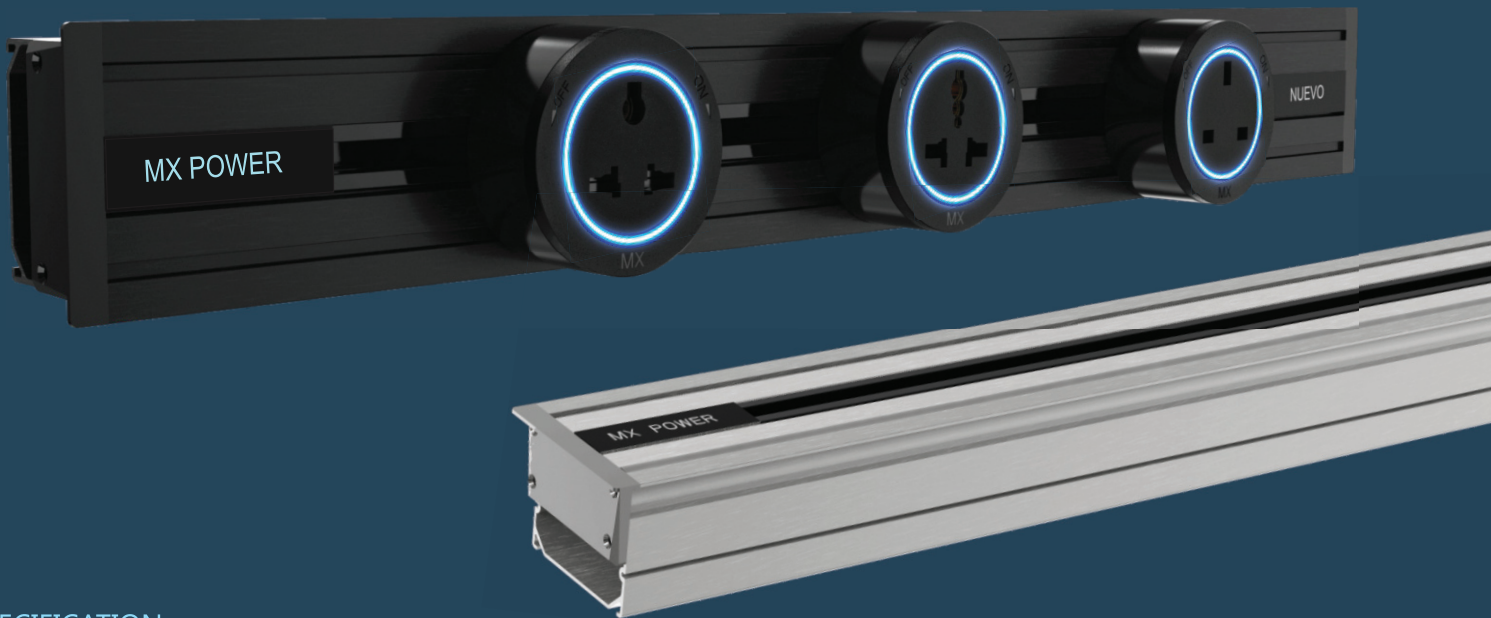
# MX NUEVO C55

## In-SURFACE POWER & DATA TRACK

MX C55 In-surface modular track series is engineered for simple recessed mount installation to cater power, data and multimedia with a cable management compartment.

Suitable for applications like boardroom, conference room and meeting room tables. Strongly recommended for office and system furniture OME segments.

- ◆ Easy to install
- ◆ Direct screw mount into surface or fasten on (15mm+)
- ◆ Optional clamp for glass, stone table top (15mm - 55mm)
- ◆ High profile, with cable managing compartments.
- ◆ Premium finish full aluminum alloy
- ◆ Designed to suit Snap-On multimedia connectors (optional-add-on)
- ◆ Suitable for network, voice / data and multimedia cables



### SPECIFICATION

#### Electrical

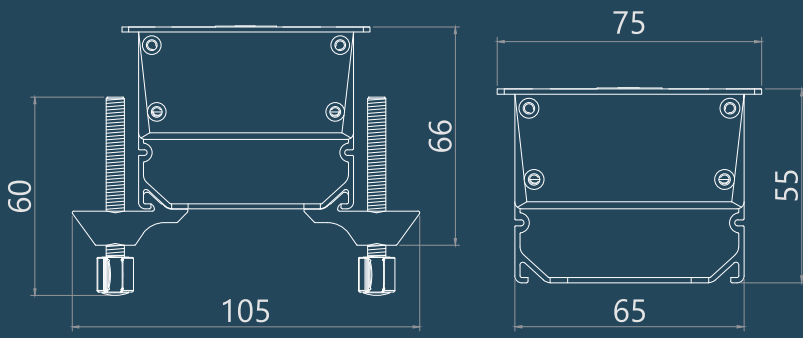
Rated Voltage	: 250V~ Single-phase
Rated Current	: 32 Amps (Max)
Frequency	: 50 / 60Hz
Terminal Capacity	: 1.25mm <sup>2</sup> - 4mm <sup>2</sup>

#### Material

Profile Housing	: Anodized Aluminum
End Cap	: Polycarbonate
Bus-bar Carrier	: Polycarbonate
Conductor	: Phosphor Bronze (Copper)

#### Size

Standard Length	: 400mm-1200mm (refer table)
Customization	: Length and configuration available upon request



Article No.	Sizes	Dimensions
MX 6301-04	400mm	75 x 55
MX 6301-05	500mm	75 x 55
MX 6301-06	600mm	75 x 55
MX 6301-08	800mm	75 x 55
MX 6301-09	900mm	75 x 55
MX 6301-10	1000mm	75 x 55
MX 6301-12	1200mm	75 x 55

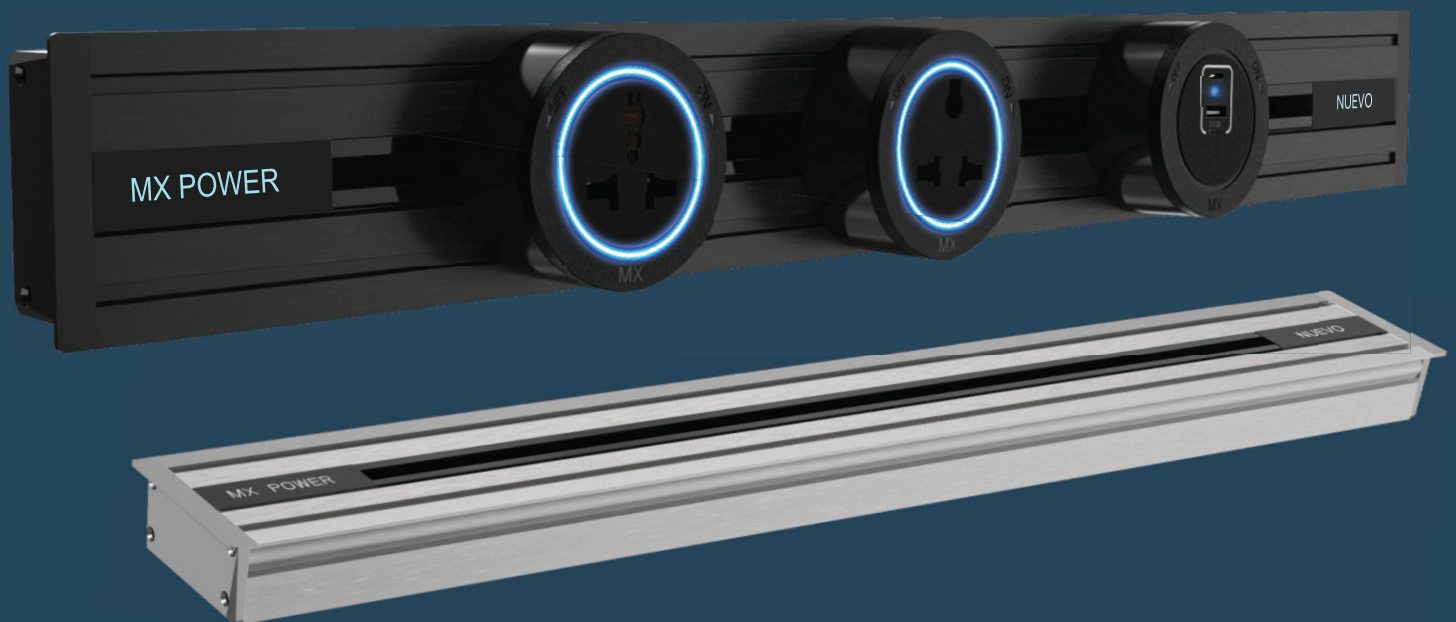
To add multimedia ports (#P) # is for the number of ports, for example recess 600mm track with 3 ports, the article number would be MX 6301-06-3P  
 For Color - add SL for Silver, BK for Black, for example recess 600m track with 3 port and color required is Silver, the article no. would be MX 6301-06-3P-SL

# MX NUEVO C34

## In-SURFACE COMPACT POWER & DATA TRACK

MX C34 in-surface modular track series is the sleek and perfect solution for recessed power & data installations allowing easy access to power for tables, desk, partitions and kitchen dado. Plastically sleek and perfect to go with modular kitchen OEM segment.

- Easy to install
- Direct screw mount into surface or fasten on (15mm+)
- Optional clamp for glass or marble top (5mm - 34mm)
- Low profile, compact design
- Premium finish full aluminum alloy
- Designed to suit snap-on multimedia connectors (optional - add-on)
- Suitable for network, voice/data and multimedia cables



### SPECIFICATION

#### Electrical

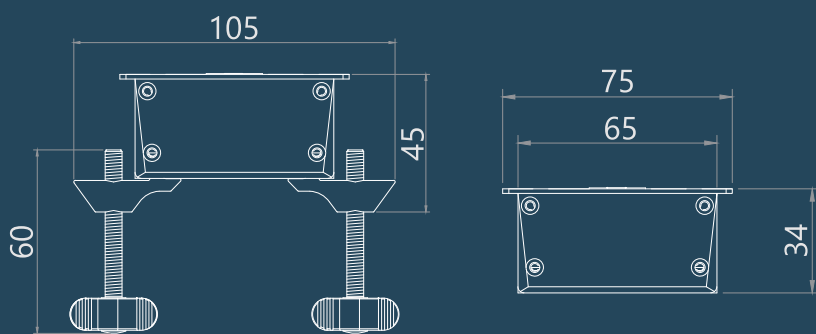
Rated Voltage : 250V~ Single-phase  
 Rated Current : 32 Amps (Max)  
 Frequency : 50 / 60Hz  
 Terminal Capacity : 1.25mm<sup>2</sup> - 4mm<sup>2</sup>

#### Material

Profile Housing : Anodized Aluminum  
 End Cap : Polycarbonate  
 Bus-bar Carrier : Polycarbonate  
 Conductor : Phosphor Bronze (Copper)

#### Size

Standard Length : 400mm-1200mm (refer table)  
 Customization : lengths and configuration available upon request



Article No.	Sizes	Dimensions
MX 6302-04	400mm	75 x 34
MX 6302-05	500mm	75 x 34
MX 6302-06	600mm	75 x 34
MX 6302-08	800mm	75 x 34
MX 6302-09	900mm	75 x 34
MX 6302-10	1000mm	75 x 34
MX 6302-12	1200mm	75 x 34

To add multimedia ports (#P) # is for the number of ports, for example recess 600mm track with 3 ports, the article number would be MX 6302-06-3P

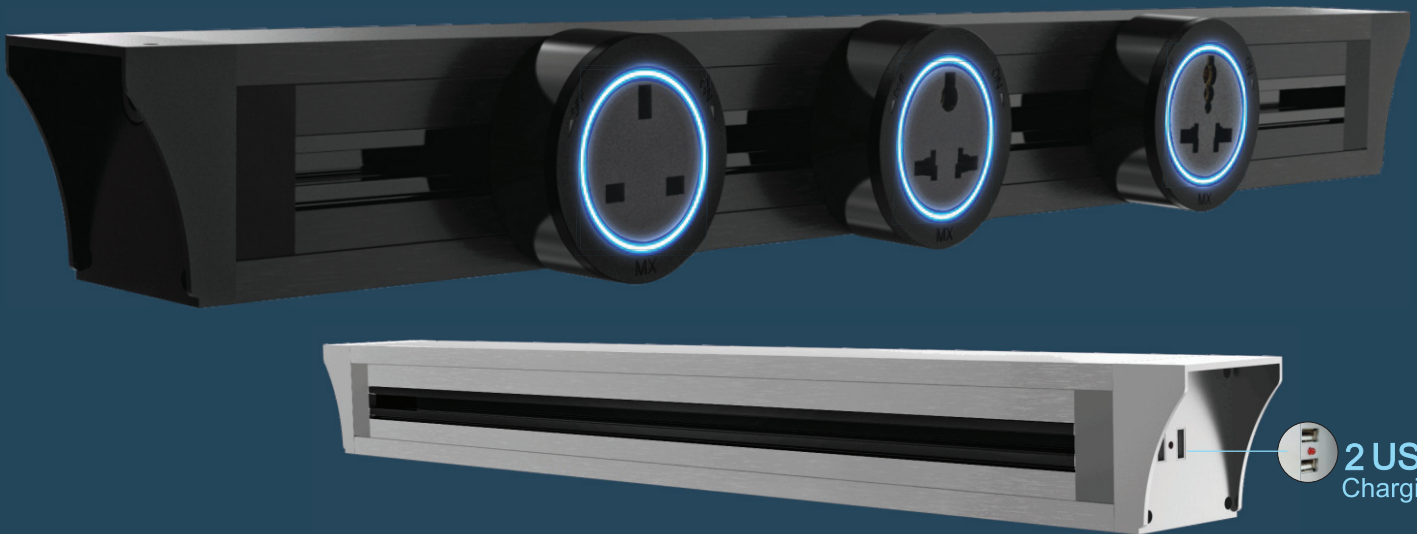
For Color - add SL for Silver, BK for Black, for example recess 600m track with 3 port and color required is Silver, the article no. would be MX 6302-06-3P-SL

# MX NUEVO S68

## UNDER DESK POWER & DATA TRACK

MX S68 under desk modular track series is a perfect solution for power & data installations allowing easy access to power below the workstation and very much convenient for any under desk application. Its modular designed end cap allows customers to customize installation patterns, either on the wall or above the table. Suitable for applications like research facility, libraries, laboratory, workshop desk and any more.

- Easy to install
- Direct screw mount on surface or fasten on wall
- High profile design allows managing cables (cable rotates 360°)
- Premium finish full aluminum alloy
- Designed to take multimedia connectors (optional-add-on)
- Suitable for network, voice / data and multimedia cables



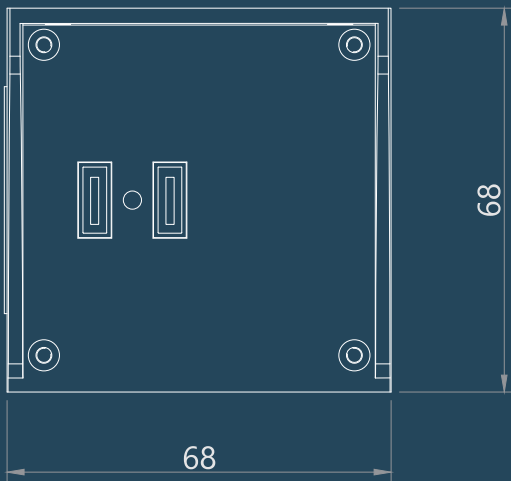
### SPECIFICATION

Electrical	
Electrical	
Rated Voltage	: 250V~ Single-phase
Rated Current	: 32 Amps (Max)
USB Charging	: 2 A type Ports, 5V-2400mA (Side Caps)
Frequency	: 50 / 60Hz
Terminal Capacity	: 1.25 mm <sup>2</sup> - 4 mm <sup>2</sup>

### Material

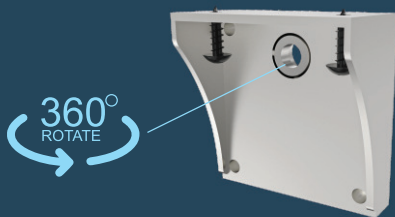
Profile Housing	: Anodized Aluminum
End Cap	: Polycarbonate
Bus-bar Carrier	: Polycarbonate
Conductor	: Phosphor Bronze (Copper)

Size	
Standard Length	: 400mm-1200mm (refer table)
Customization	: Length and configuration available upon request



Article No.	Sizes	Dimensions
MX 6303-04	400mm	68 x 68
MX 6303-05	500mm	68 x 68
MX 6303-06	600mm	68 x 68
MX 6303-08	800mm	68 x 68
MX 6303-09	900mm	68 x 68
MX 6303-10	1000mm	68 x 68
MX 6303-12	1200mm	68 x 68

#### Mounting Features



Under Desk



On Wall



Above Desk

To add multimedia ports (#P) # is for the number of ports, for example recess 600mm track with 3 ports, the article number would be MX 6303-06-3P

For Color - add SL for Silver, BK for Black, for example recess 600mm track with 3 port and color required is Silver, the article no. would be MX 6303-06-3P-SL

# MX NUEVO D88

## DESKTOP POWER & DATA TRACK

MX D88 desktop modular track series is a perfect solution for power & data installations allowing easy access to power from above the tables and convenient for all desktop applications. USB charging on the end cap offers easy connectivity and space management. The PD module when paired with a power supply unit provides up to 95W through the USB Type-C port allowing for laptop charging, and fast charge through the USB Type-A port; perfect for phones and tablets. Our desk mount power tracks are most popular for workspace environments.

- Easy to install
- Direct clamp or patch mount on surface
- High profile design allows managing cables
- Premium finish with full aluminum alloy
- Designed to take multimedia connectors (optional-add-on)
- Suitable for network, voice / data and multimedia cables



### SPECIFICATION

#### Electrical

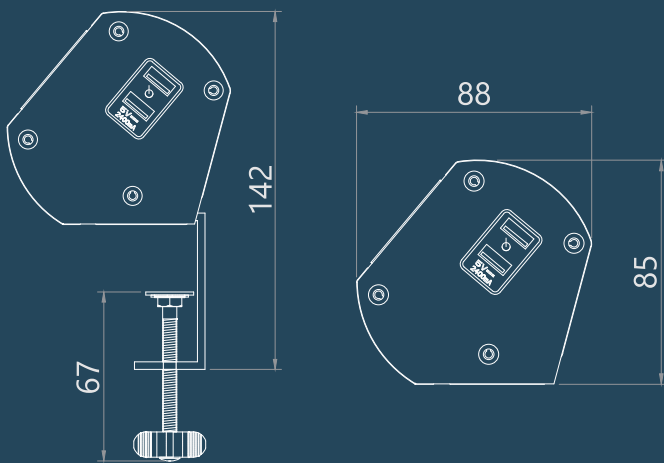
Rated Voltage	: 250V~ Single-phase
Rated Current	: 32 Amps (Max)
USB Charging	: 2 A type Ports, 5V-2400mA (Side Caps)
Frequency	: 50 / 60Hz
Terminal Capacity	: 1.25 mm <sup>2</sup> - 4 mm <sup>2</sup>

#### Material

Profile Housing	: Anodized Aluminum
End Cap	: Polycarbonate
Bus-bar Carrier	: Polycarbonate
Conductor	: Phosphor Bronze (Copper)

#### Size

Standard Length	: 400mm-1200mm
Customization	: Length and configuration available upon request



Article No.	Sizes	Dimensions
MX 6304-04	400mm	88 x 84
MX 6304-05	500mm	88 x 84
MX 6304-06	600mm	88 x 84
MX 6304-08	800mm	88 x 84
MX 6304-09	900mm	88 x 84
MX 6304-10	1000mm	88 x 84
MX 6304-12	1200mm	88 x 84

To add multimedia ports (#P) # is for the number of ports, for example recess 600mm track with 3 ports, the article number would be MX 6304-06-3P

For Color - add SL for Silver, BK for Black, for example recess 600m track with 3 port and color required is Silver, the article no. would be MX 6304-06-3P-SL



CONNECTING THE FUTURE

# SMART TECHNOLOGY





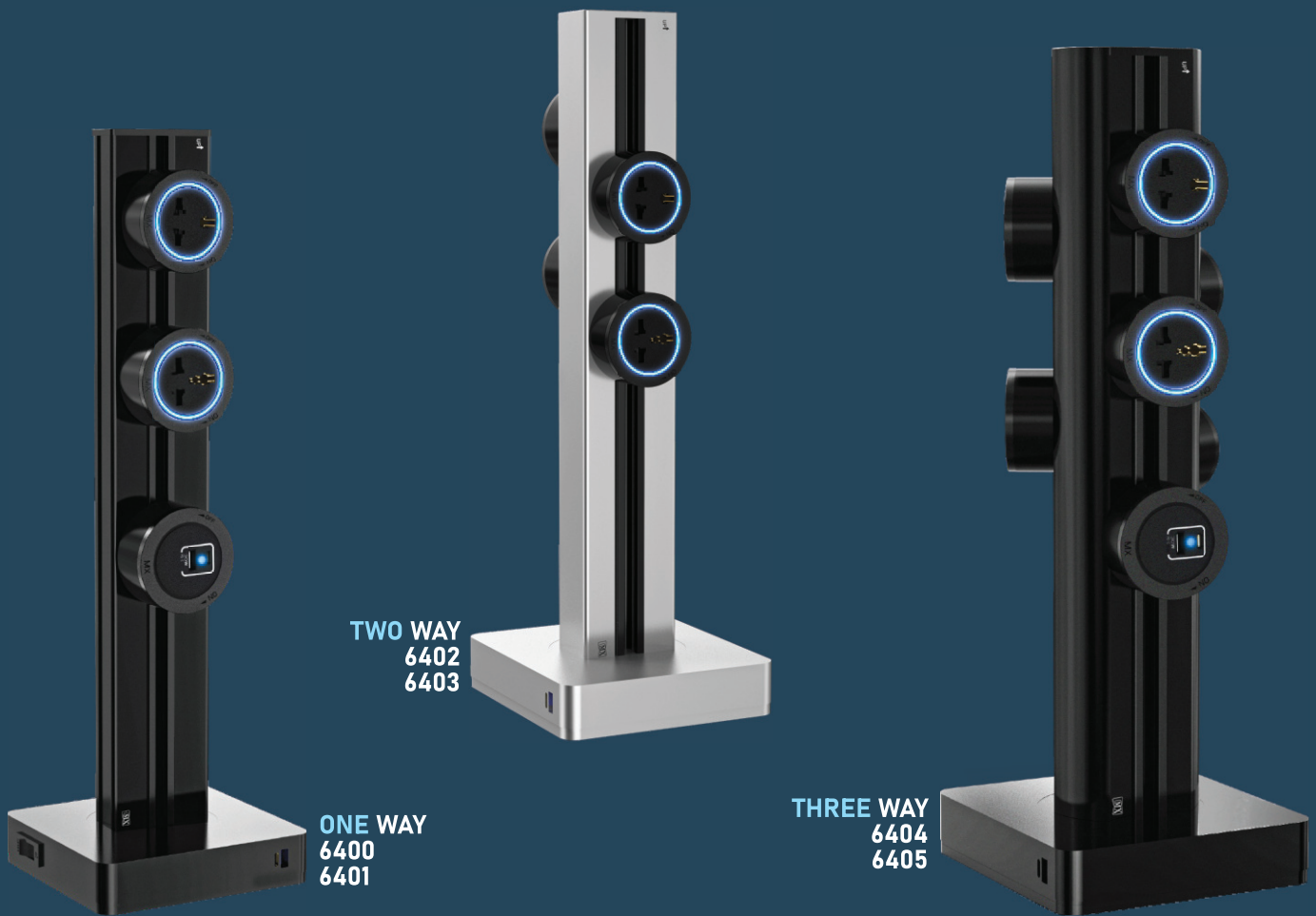
CONNECTING THE FUTURE

# SMART TECHNOLOGY



# MX FREESTANDING TOWER TRACK

MX freestanding tower tracks are stable and conveniently perfect for sharing power. Tower tracks will integrate into any space as a flexible and convenient solution to bring power and USB charging to previously unpowered areas. Supports a wide variety of international sockets & with optional integrated USB A & C type charging port. MX Tower is an ideal choice to relocate as and when you need. Suitable for application like open space inside or in front of a public building concourse, lounges & breakout areas.



## SPECIFICATION

### Electrical

Rated Voltage : 250V~ Single-phase  
 Rated Current : 32 Amps (Max)  
 USB Charging : 2 ports type A, 5V/2400mAmps  
 USB Charging : Type C & A PD 30W  
 Frequency : 50 / 60Hz

### Size

Standard Track : 400mm  
 Customization : Available upon request

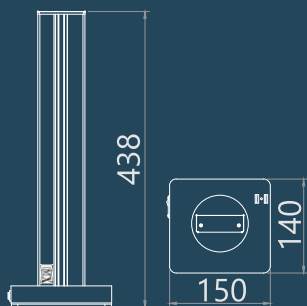
### Material

Profile Housing : Anodized Aluminum  
 End Cap : Polycarbonate  
 Bus-bar Carrier : Polycarbonate  
 Conductor : Phosphor Bronze (Copper)

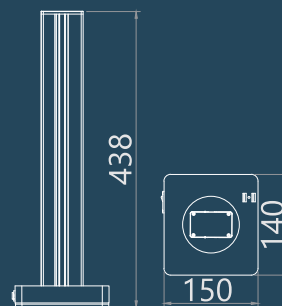


- ◆ Plug & Play
- ◆ Freestanding with Heavy Base
- ◆ Premium finish aluminum alloy

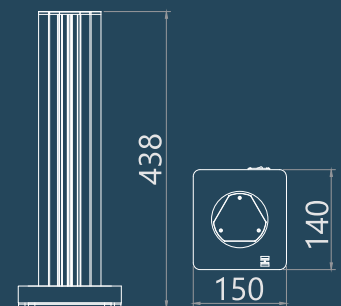
MX Article No.	USB A	USB A & C	Dimensions
6400	YES	-	438 x 150 x 140
6401	-	YES	438 x 150 x 140
6402	YES	-	438 x 150 x 140
6403	-	YES	438 x 150 x 140
6404	YES	-	438 x 150 x 140
6405	-	YES	438 x 150 x 140



**1 WAY**



**2 WAY**



**3 WAY**

For Color - Add SL for Silver, BK for Black, for example MX 6401-04 color required is Silver, the article no. would be MX 6401-04-SL

# MX FREESTANDING POWER POLE

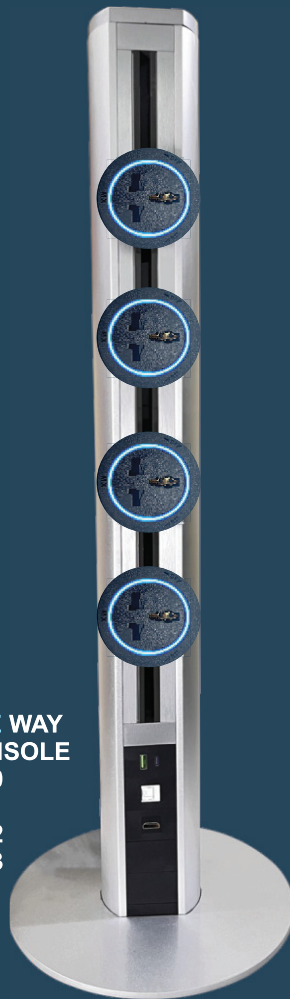
## With fall down power automatic cut off protection

MX freestanding tower tracks are stable and conveniently perfect for sharing power. Tower tracks will integrate into any space as a flexible and convenient solution to bring power and USB charging to previously unpowered areas. Supports a wide variety of universal sockets, HDMI, Cat-6 & with optional integrated USB A & C type charging port. MX Tower is an ideal choice to relocate as and when you need. As its fall down power automatic gets cut - off (inbuilt cut-off protection) Suitable for application like open space inside or in front of public building concourse, lounges & breakout areas.

**ONE WAY SQUARE**  
6406  
6407  
6408  
6409



**ONE WAY CONSOLE**  
6410  
6411  
6412  
6413



**THREE WAY**  
6414



### SPECIFICATION

#### Electrical

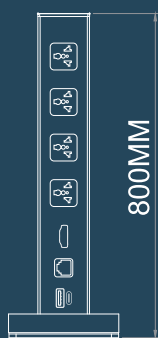
Rated Voltage	: 250v ~ Single - phase
Rated Current	: 32 Amps (Max) & 6/16 Amps (Max)
1USB A + 1USB C	: 30W PD Fast Charging
1USB A + 1USB C	: 30W PD Fast Charging with Voltage Display
RJ-45	: CAT -6
Port	: HDMI
Finish	: Silver - White - Black
End Cap	: Polycarbonate
Bus-bar and Carrier	: Polycarbonate

Material	: Anadized Aluminum, ABS, FRP, GRP(Flame retardant)
Conductor	: Phosphor Bronzed (Copper)
Frequency	: 50/60Hz

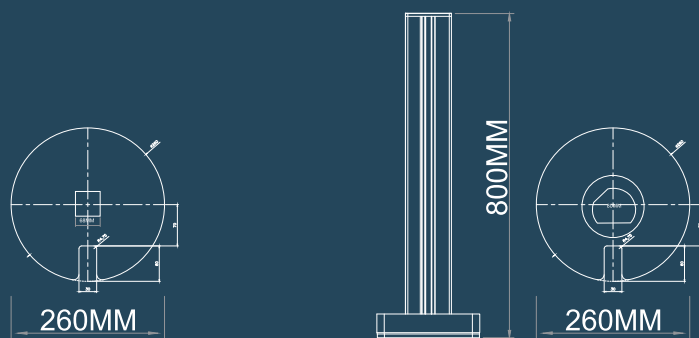
Size	
Standard length	: 400 mm
Customization	: Upon Request



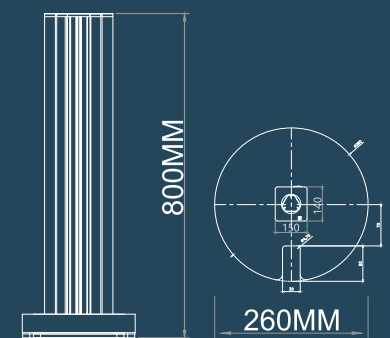
MX Article NO.	Universal Socket 6-13A	Power Track	Switch 6A	USB A & C	USB A & C With Voltage Display	CAT 6	HDMI	Dimensions IN MM
6406	04		1	Yes		Yes	Yes	800 X 260
6407	04		1		Yes	Yes	Yes	800 X 260
6408		Yes		Yes		Yes	Yes	800 X 260
6409		Yes			Yes	Yes	Yes	800 X 260
6410	04		1	Yes		Yes	Yes	800 X 260
6411	04		1		Yes	Yes	Yes	800 X 260
6412		Yes		Yes		Yes	Yes	800 X 260
6413		Yes			Yes	Yes	Yes	800 X 260
6414		Yes	1	Yes				800 X 260



**1 WAY**



**2 WAY**



**3 WAY**

# ADAPTERS & MULTIMEDIA CONNECTORS

Easy to use adaptors that can be added, removed or repositioned anywhere along the track with a 90° degree clockwise twist connects it into place, the red and blue light indicate that it's ready for use. Twist anti-clockwise 45° to turn off and 90° to remove or relocate. Compatible with all the European and International standards plugs with an easy fuss-free power management solutions.

## CLASSIC SERIES COMPACT ADAPTORS

**MX 6001**  
6/10/13Amps  
IN/EU/BS



**MX 6002**  
6/13Amps  
IN/BS



**MX 6003**  
6/16Amps  
IN



**MX 6005**  
13Amps  
BS



**MX 6006**  
5V, 2400mA  
USB Charger



**MX 6007-30W**  
**MX 6008-50W**  
USB C + A  
Fast Charger



**MX 6011**  
16Amps  
Plug With Fuse



# PREMIUM SERIES BLUE LED ADAPTOR



**MX 6015**  
6/10/13Amps  
IN/EU/BS



**MX 6016**  
6/13Amps  
IN/BS



**MX 6017**  
13Amps  
BS



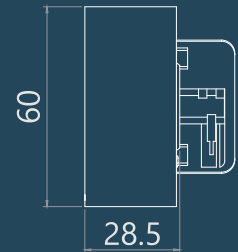
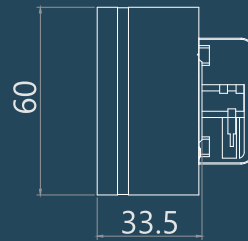
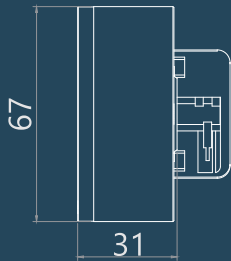
**MX 6018**  
15Amps  
USA-JPN



**MX 6019**  
C & A 30W  
USB Charger



**MX 6020-50W**  
USB C + A  
Fast Charger



Premium Adapters Blue LED

Classic Indian Adapters 6/16A

Classic Compact Adapters

## MULTIMEDIA CONNECTORS



**MX 6031**  
Cat 3 Voice



**MX 6032**  
USB 3.0



**MX 6033**  
USB 2.0



**MX 6034**  
VGA 15 Pin



**MX 6035**  
Aux/Stereo  
3.5mm



**MX 6036**  
HDMI



**MX 6037**  
Display Port



**MX 6041**  
Cat 6 Data



**MX 6042**  
HDMI



**MX 6043**  
USB Type C



**MX 6044**  
USB 2.0



**MX 6045**  
C+A PD 30W



**MX 6046**  
C+A PD 30W  
Digital Display



**MX 6047**  
Blank Plate

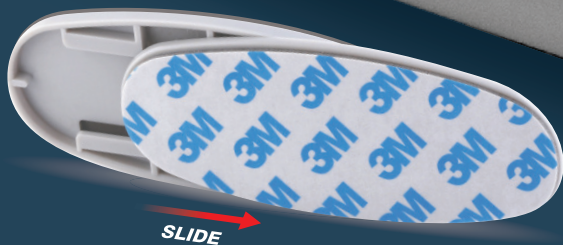


# WORKSPACE

DESKTOP  
CONSOLE



WITH **3M**  
ADHESIVE TAPE



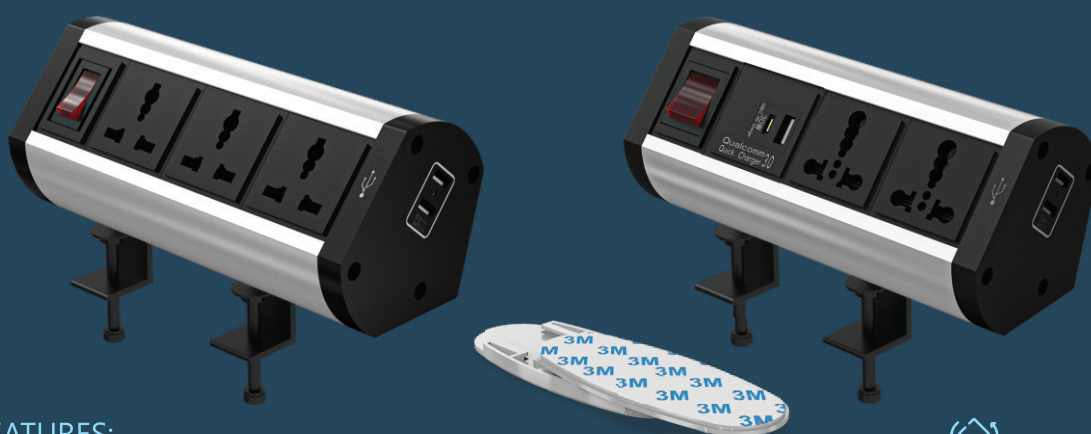


# WORKSPACE

DESKTOP  
CONSOLE

# DESKTOP CONSOLE

MX desktop consoles offer a unique combination of features: speed of installation, strength, versatility, aesthetics and configurability unlike anything that has been seen before within a power and cable management system. USB charging on the end cap offers easy connectivity and space management. The PD module when paired with a power supply unit provides up to 95W through the USB Type-C port allowing for laptop charging, and fast charge through the USB Type-A port; perfect for phones and tablets. Our Power Consoles are the most popular units for workspace environments.



## KEY FEATURES:



PD Qualcomm Fast Charging  
for tablets & laptops



Customizable Configuration  
& Mounting's



Can be used  
above desk & on wall



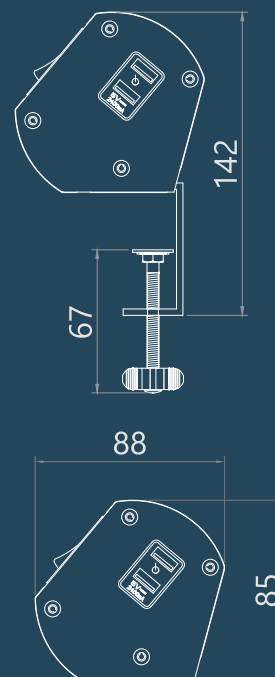
USB Charging on End Cap



Modular Design

## SPECIFICATION:

Rated Voltage	: 250V~ Single-phase
Rated Current	: 6-16 amps (Max)
USB Charger	: 2 typeA ports 5V,2400mA (Side Cap)
Finish	: Silver-Black
Material	: Aluminum, ABS, FRP, GRP (flame retardant)
Wiring	: 3 x 0.75 mm <sup>2</sup> Cable 1.5 meter with 6 Amps Plug : 3 x 1.5 mm <sup>2</sup> Cable 1.5 meter with 16 Amps Plug
Standard Pack	: C type mounting clamps with fastening key. : Multi functional patch panel holder 3M tape.
Customization	: Upon Request



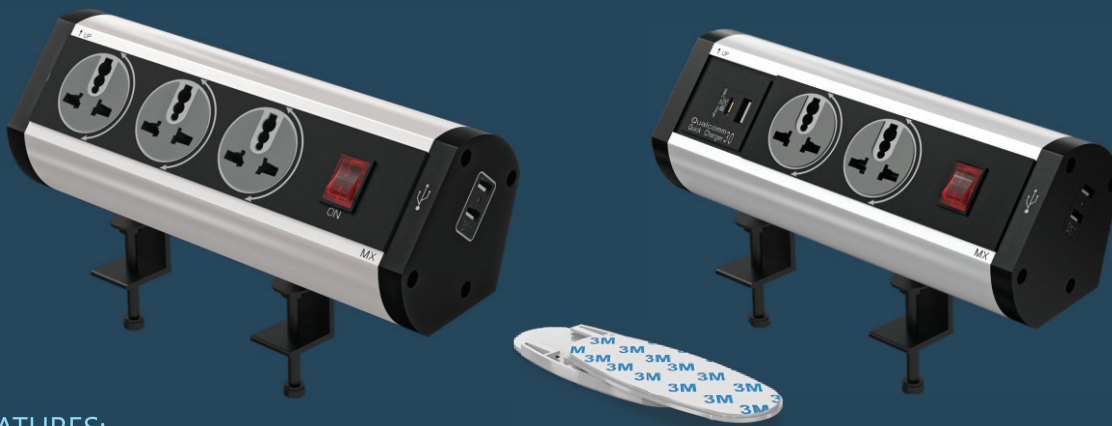


MX Article No.	Universal Socket 6-13A	Universal Socket 6-16A	Switch 10A/16A	USB A 3.0 USB C 65W	USB A 3.0 USB C 95W	USB A 5V 2400mA Side Cap	Dimensions
4173	2		1			2	152 x 88 x 85
4174	3		1			2	200 x 88 x 85
4175	4		1			2	246 x 88 x 85
4176	6		1			2	340 x 88 x 85
4177		2	1			2	152 x 88 x 85
4178		3	1			2	200 x 88 x 85
4179		4	1			2	246 x 88 x 85
4180		6	1			2	340 x 88 x 85
4181	2		1	1		2	200 x 88 x 85
4182	3		1	1		2	246 x 88 x 85
4183	4		1	1		2	394 x 88 x 85
4184	6		1	1		2	388 x 88 x 85
4185	2		1		1	2	205 x 88 x 85
4186	3		1		1	2	251 x 88 x 85
4187	4		1		1	2	299 x 88 x 85
4188	6		1		1	2	393 x 88 x 85
4189		2	1	1		2	200 x 88 x 85
4190		3	1	1		2	246 x 88 x 85
4191		4	1	1		2	394 x 88 x 85
4192		6	1	1		2	388 x 88 x 85
4193		2	1		1	2	205 x 88 x 85
4194		3	1		1	2	251 x 88 x 85
4195		4	1		1	2	299 x 88 x 85
4196		6	1		1	2	393 x 88 x 85

For Color - add SL for Silver, BK for Black, for example MX 4186 color required is Silver, the article no. would be MX 4186-SL

# DESKTOP CONSOLES ROTATABLE SOCKETS 180°

MX desktop consoles with 180 degree rotatable sockets come with a unique combination of features: speed of installation, strength, versatility, aesthetics and configurability unlike anything that has been seen before within a power management system. USB charging on the end cap offers easy connectivity and space management. The PD module when paired with a power supply unit provides up to 95W through the USB Type-C port allowing for laptop charging, and fast charge through the USB Type-A port; perfect for phones and tablets. Our Power Consoles are the most popular units for workspace environments.



## KEY FEATURES:



Modular Design



Customizable Configuration  
& Mounting's



Can be used  
above desk & on wall



USB Charging on End Cap

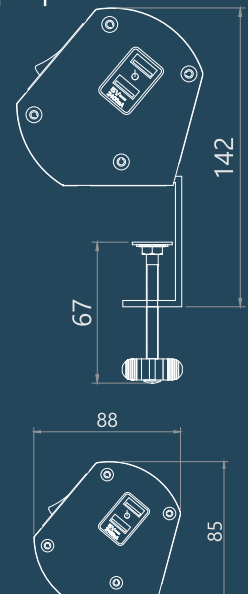


PD Qualcomm Fast Charging  
for tablets & laptops



## SPECIFICATION

Rated Voltage	: 250V~ Single-phase
Rated Current	: 6-13amps (Max)
USB Charging	: 2 Type A Ports 5V,2400mA (Side Cap)
Finish	: Silver - Black
Material	: Aluminum, ABS, FRP, GRP (flame retardant)
Wiring	: 3 x 0.75 mm <sup>2</sup> Cable 1.5 meter with 6 Amps Plug.
Standard Pack	: 'C' type mounting clamps with fastening key Multifunctional patch panel holder 3M tape.
Customization	: Upon Request





MX Article No.	Universal Socket 6-13A	Switch 10A	USB A 3.0 USB C 65W	USB A 3.0 USB C 95W	USB A 5V 2400mA Side Cap	Dimensions
4197	2	1			2	184 x 88 x 85
4198	3	1			2	234 x 88 x 85
4199	4	1			2	284 x 88 x 85
4200	6	1			2	384 x 88 x 85
4201	2	1	1		2	232 x 88 x 85
4202	3	1	1		2	282 x 88 x 85
4203	4	1	1		2	332 x 88 x 85
4204	6	1	1		2	432 x 88 x 85
4205	2	1		1	2	236 x 88 x 85
4206	3	1		1	2	286 x 88 x 85
4207	4	1		1	2	336 x 88 x 85
4208	6	1		1	2	436 x 88 x 85

For Color - add SL for Silver, BK for Black, for example MX 4200 color required is Silver, the article no. would be MX 4200-SL

# UNDER DESK CONSOLE

MX under desk consoles offer a unique combination of features: speed of installation, strength, versatility, aesthetics and configurability unlike anything that has been seen before within a power management system. USB charging on the end cap offers easy connectivity and space management. The PD module when paired with a power supply unit provides up to 95W through the USB Type-C port allowing for laptop charging, and fast charge through the USB Type-A port; perfect for phones and tablets. Our Power Consoles are the most popular units for workspace environments.



## KEY FEATURES:



Modular Design



Customizable Configuration & Mounting's



Can be used above desk & on wall



USB Charging on End Cap



PD Qualcomm Fast Charging for tablets & laptops



Under Desk



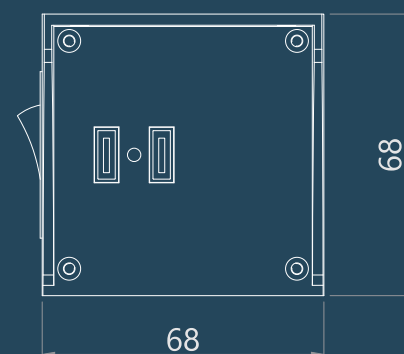
On Wall



Above Desk

## SPECIFICATION :

Rated Voltage	: 250V~ Single-phase
Rated Current	: 6-16 amps (Max)
USB Charging	: 2 type A ports 5V, 2400mA (Side Cap)
Finish	: Silver & Black Anodized
Material	: Aluminum, ABS, FRP, GRP (flame retardant)
Wiring	: 3 x 0.75 mm <sup>2</sup> Cable 1.5 meter with 6 Amps Plug 3 x 1.5 mm <sup>2</sup> Cable 1.5 meter with 16 Amps Plug
Standard pack	: Multi-functional patch panel holder 3M tape.
Customized	: Upon Request



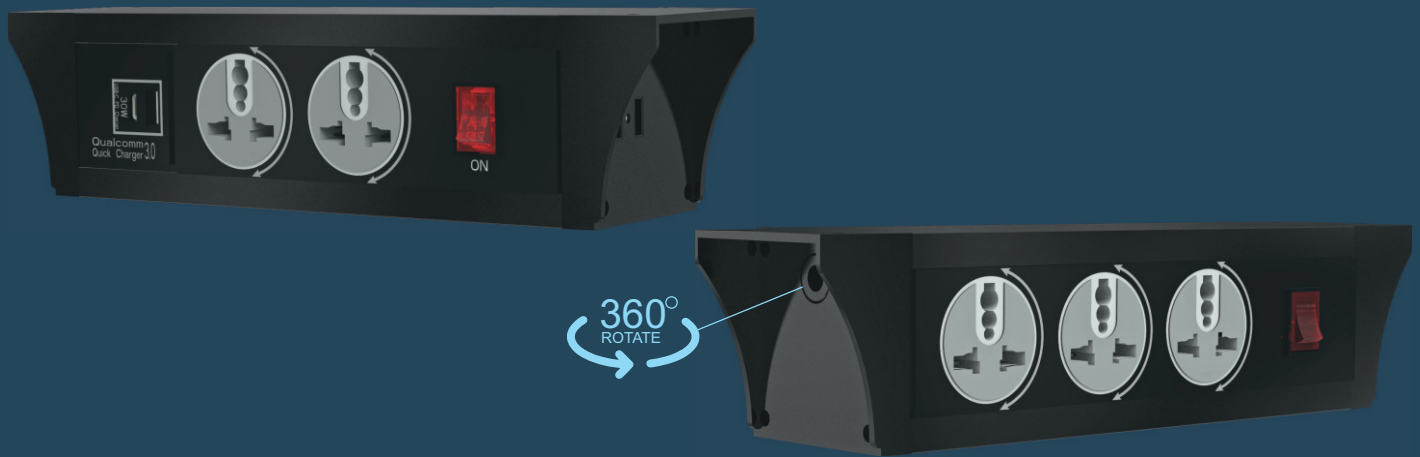


MX Article No.	Universal Socket 6-13A	Universal Socket 6-16A	Switch 16A	USB A 3.0 USB C 65W	USB A 3.0 USB C 95W	USB A 5V 2400mA Side Cap	Dimensions
6407	2		1			2	235 x 68 x 68
6408	3		1			2	285 x 68 x 68
6409	4		1			2	335 x 68 x 68
6410	6		1			2	435 x 68 x 68
6411		2	1			2	235 x 68 x 68
6412		3	1			2	285 x 68 x 68
6413		4	1			2	335 x 68 x 68
6414		6	1			2	435 x 68 x 68
6415	2		1	1		2	285 x 68 x 68
6416	3		1	1		2	335 x 68 x 68
6417	4		1	1		2	385 x 68 x 68
6418	6		1	1		2	485 x 68 x 68
6419	2		1		1	2	290 x 68 x 68
6420	3		1		1	2	340 x 68 x 68
6421	4		1		1	2	390 x 68 x 68
6422	6		1		1	2	490 x 68 x 68
6423		2	1	1		2	285 x 68 x 68
6424		3	1	1		2	335 x 68 x 68
6425		4	1	1		2	385 x 68 x 68
6426		6	1	1		2	485 x 68 x 68
6427		2	1		1	2	290 x 68 x 68
6428		3	1		1	2	340 x 68 x 68
6429		4	1		1	2	390 x 68 x 68
6430		6	1		1	2	490 x 68 x 68

For Color - add SL for Silver, BK for Black, for example MX 6420 color required is Silver, the article no. would be MX 6420-SL

# UNDER DESK CONSOLE ROTATABLE SOCKETS 180°

MX under desk console comes with 180 degree rotatable sockets and offers a unique combination of features: speed of installation, strength, versatility, aesthetics and configurability unlike anything that has been seen before within a power management system. USB charging on the end cap offers easy connectivity and space management. The PD module when paired with a power supply unit provides up to 95W through the USB Type-C port allowing for laptop charging, and fast charge through the USB Type-A port; perfect for phones and tablets. Our Power Consoles are the most popular units for workspace environments.



## KEY FEATURES:



Modular Design



Customizable Configuration  
& Mounting's



Can be used  
above desk & on wall



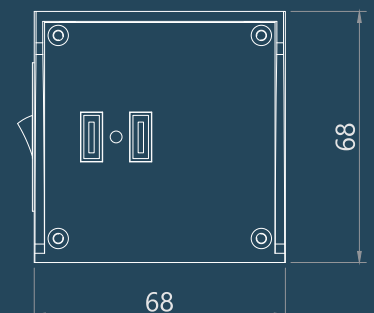
USB Charging on End Cap



PD Qualcomm Fast Charging  
for tablets & laptops

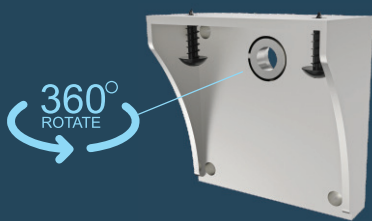
## SPECIFICATION :

Rated Voltage	: 250V~ Single-phase
Rated Current	: 6-13amps (Max)
USB Charger	: 2 type A ports 5V,2400mA (Side Cap)
Finish	: Silver & Black Anodized
Material	: Aluminum, ABS, FRP, GRP (flame retardant)
Wiring	: 3 x 0.75 mm <sup>2</sup> Cable 1.5 meter with 6 Amps Plug
Standard Pack	: Multi-functional patch panel holder 3M tape.
Customization	: Upon Request

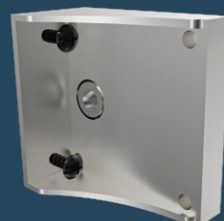




MX Article No.	Universal Socket 6-13A	Switch 10A	USB A 3.0 USB C 65W	USB A 3.0 USB C 95W	USB A 5V 2400mA Side Cap	Dimensions
6431	2	1			2	270 x 68 x 68
6432	3	1			2	320 x 68 x 68
6433	4	1			2	370 x 68 x 68
6434	6	1			2	470 x 68 x 68
6435	2	1	1		2	350 x 68 x 68
6436	3	1	1		2	400 x 68 x 68
6437	4	1	1		2	450 x 68 x 68
6438	6	1	1		2	550 x 68 x 68
6439	2	1		1	2	355 x 68 x 68
6440	3	1		1	2	405 x 68 x 68
6441	4	1		1	2	455 x 68 x 68
6442	6	1		1	2	555 x 68 x 68



Under Desk



On Wall



Above Desk

For Color - add SL for Silver, BK for Black, for example MX 6434 color required is Silver, the article no. would be MX 6434-SL

# MX NUEVO C55

## C55 In-Surface Power Distribution Unit

MX C55 In-surface power distribution unit series is engineered for simple recessed mount installation to cater power, data and multimedia with a cable management compartment. Aluminum alloy housings, suitable for varieties of workstation & executive tables. Strongly recommended for office and system furniture OME segments.

- EASY TO INSTALL
- Direct screw mount into surface or fasten on (15mm+)
- Optional clamp for glass, marble, stone table top (15mm - 55mm)
- High profile, with cable managing compartments.
- Premium finish full aluminum alloy
- Designed to suit Snap-On power & multimedia sockets
- Suitable for network, voice / data and multimedia cables
- Available in customized configuration and lengths.



### SPECIFICATION

#### Electrical

Rated Voltage	: 250v ~ Single - phase
Rated Current	: 6/16 Amps (Max)
1USB A + 1USB C	: 30W PD Fast Charging
1USB A + 1USB C	: 30W PD Fast Charging with Voltage Display
RJ-45	: CAT -6
Port	: HDMI 4K
Finish	: Silver - Black
Material	: Aluminum, ABS, FRP, GRP(Flame retardant)
Conductor	: 100% Copper Contacts Plated

#### Size

Standard length	: 2 / 3 / 4 & 6 Way
Customization	: Upon Request

### KEY FEATURES:

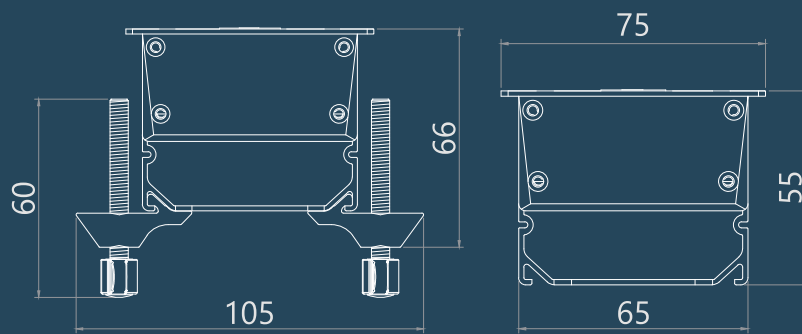
 PD Qualcomm Fast Charging for tablets & laptops

 USB A & C

 Can be used above desk & on wall

 Modular Design

 Customizable Configuration & Mounting's



MX Article No.	Universal Socket 6-13A	Universal Socket 6-16A	Switch 16A	USB A & C	USB A & C With Voltage Display	CAT 6	HDMI	Dimensions Cut Size
7031	02		1	Yes		Yes	Yes	235 X 65 X 55
7032	03		1	Yes		Yes	Yes	290 X 65 X 55
7033	04		1	Yes		Yes	Yes	345 X 65 X 55
7034	06		1	Yes		Yes	Yes	424 X 65 X 55
7035		02	1	Yes		Yes	Yes	235 X 65 X 55
7036		03	1	Yes		Yes	Yes	290 X 65 X 55
7037		04	1	Yes		Yes	Yes	344 X 65 X 55
7038		06	1	Yes		Yes	Yes	424 X 65 X 55
7039	02		1		Yes	Yes	Yes	260 X 65 X 55
7040	03		1		Yes	Yes	Yes	315 X 65 X 55
7041	04		1		Yes	Yes	Yes	368 X 65 X 55
7042	06		1		Yes	Yes	Yes	424 X 65 X 55
7043		02	1		Yes	Yes	Yes	260 X 65 X 55
7044		03	1		Yes	Yes	Yes	315 X 65 X 55
7045		04	1		Yes	Yes	Yes	368 X 65 X 55
7046		06	1		Yes	Yes	Yes	424 X 65 X 55

# MX NUEVO C34

## In-Surface Sleek Power Distribution Unit

MX C34 In-surface power distribution unit series is engineered for simple recessed mount installation to cater power, data and multimedia in a low depth profile. A perfect solution for recessed power & data installations allowing easy access to power for tables, desk, and partitions. Plastically sleek and perfect to go with the home & office workspace.

- Easy to install
- Direct screw mount into surface or fasten on (15mm+)
- Optional clamp for glass, marble, stone table top (15mm - 55mm)
- Low profile, sleek design.
- Premium finish full aluminum alloy
- Designed to suit Snap-On power & multimedia sockets
- Suitable for network, voice / data and multimedia cables
- Available in customized configuration and lengths




### SPECIFICATION

#### Electrical


Rated Voltage	: 250v ~ Single - phase
Rated Current	: 6/16 Amps (Max)
1USB A + 1USB C	: 30W PD Fast Charging
1USB A + 1USB C	: 30W PD Fast Charging with Voltage Display
RJ-45	: CAT -6
Port	: HDMI 4K
Finish	: Silver - Black
Material	: Aluminum, ABS, FRP, GRP(Flame retardant)
Conductor	: 100% Copper Contacts Plated

Size	
Standard length	: 2 / 3 / 4 & 6 Way
Customization	: Upon Request


### KEY FEATURES:




PD Qualcomm Fast Charging  
for tablets & laptops




USB A & C



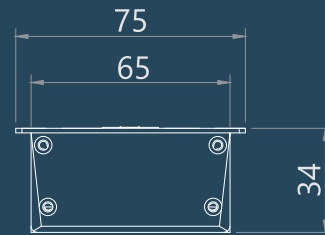
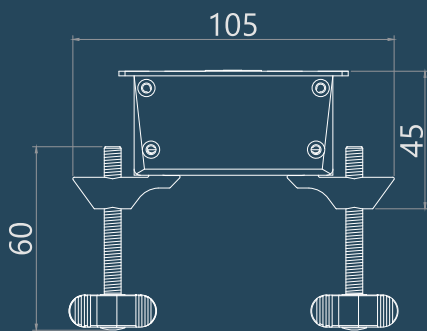
Can be used  
above desk & on wall



Modular Design



Customizable Configuration  
& Mounting's



MX Article NO.	Universal Socket 6-13A	Universal Socket 6-16A	Switch 16A	USB A & C	USB A & C With Voltage Display	CAT 6	HDMI	Dimensions Cut Size
7047	02		1	Yes		Yes	Yes	235 X 65 X 40
7048	03		1	Yes		Yes	Yes	290 X 65 X 40
7049	04		1	Yes		Yes	Yes	345 X 65 X 40
7050	06		1	Yes		Yes	Yes	434 X 65 X 40
7051		02	1	Yes		Yes	Yes	235 X 65 X 40
7052		03	1	Yes		Yes	Yes	290 X 65 X 40
7053		04	1	Yes		Yes	Yes	344 X 65 X 40
7054		06	1	Yes		Yes	Yes	434 X 65 X 40
7055	02		1		Yes	Yes	Yes	260 X 65 X 40
7056	03		1		Yes	Yes	Yes	315 X 65 X 40
7057	04		1		Yes	Yes	Yes	368 X 65 X 40
7058	06		1		Yes	Yes	Yes	434 X 65 X 40
7059		02	1		Yes	Yes	Yes	260 X 65 X 40
7060		03	1		Yes	Yes	Yes	315 X 65 X 40
7061		04	1		Yes	Yes	Yes	368 X 65 X 40
7062		06	1		Yes	Yes	Yes	434 X 65 X 40



# MOTORIZED TURN POP-UP

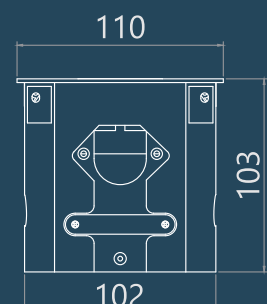
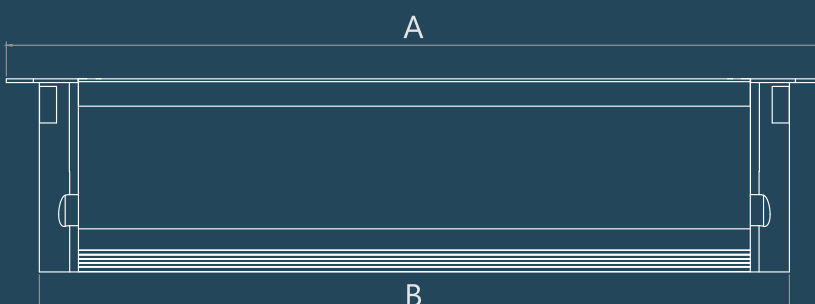
Motorized turn Plug & Play (PnP) Pop-Up Boxes allow the installation processes to be adapted quickly & simply. Easy connection connectivity comes with pre-wired patch in - patch out cables. Motorized function gives convenience to open and close the panel. Break beam sensors protect accidental closing when the product is in use. Aluminum alloy material, suitable for conference & boardroom tables.



### SPECIFICATION :

Rated Voltage	: 250V~ Single-phase
Rated Current	: 6-13Amps (Max)
USB Charger	: Type A & C Ports 18W
Material	: Aluminum, Polycarbonate
Finish Colors	: Silver & Black (Anodized)
Wiring	: 3 x 1 mm <sup>2</sup> Cable 1.5 meter with 6 Amps Plug.
Multimedia	: Pre-connected Cable
Standard Pack	: Mounting Hardware

MX Article No.	Universal Socket 6-13A	2 USB A + C 18W	Data Cat	HDMI 4K	USB A Data	VGA 15 Pin	Aux 3.5	Silver	Black	Dimensions (mm)		Cutout (mm)
										A	B	
7000	3	1	2	1	-	-	-	Yes	-	435 x 110 x 103	405 x 104	
7000A	3	1	2	1	-	-	-	-	Yes	435 x 110 x 103	405 x 104	
7000B	2	1	2	1	1	1	1	Yes	-	460 x 110 x 103	430 x 104	
7000C	2	1	2	1	1	1	1	-	Yes	460 x 110 x 103	430 x 104	



# MOTORIZED TURN POP-UP MELD WIRELESS

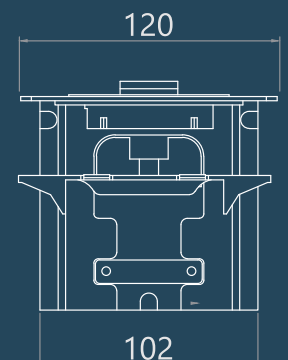
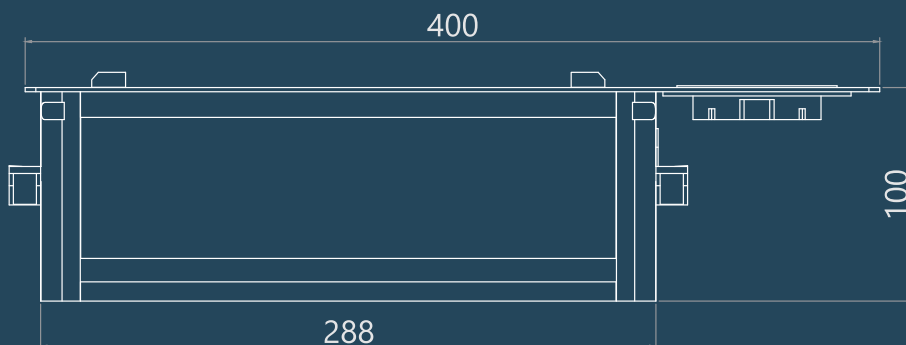
MX Motorized Turn melded wireless Plug & Play (PnP) Pop-Up Boxes allows the installation processes to be adapted quickly & simply. A unique product for electrical outlets and charging electronic devices, by using patch cord or wireless. The wireless feature is compatible with all devices that comply with Qi standards. Easy connection connectivity comes with pre-wired patch in - patch out cables. Motorized function gives convenience to open and close the panel. Break beam sensors protect accidental closing when the product is in use. Aluminum alloy material, suitable for conference & boardroom tables.



## SPECIFICATION :

Mx Artical No.: 7000D

Rated Voltage	: 250V~ Single-phase
Rated Current	: 6-13Amps (Max)
USB Charger	: Type A & C Ports 18W
Wireless Charger	: 15 Watts
Material	: Aluminium, Polycarbonate
Finish Colors	: Silver & Black
Wiring	: 3 x 1 mm <sup>2</sup> Cable 1.5 meter with 6 Amps Plug.
Multimedia	: Pre-connected cables
Standard pack	: Locking clasp
Dimension	: 400mm x 120mm x 100mm
Cutout Dimension	: 385mm x 105mm
Configuration	: 2 Universal Socket, USB Charger (C+A), 1 CAT6, 1 HDMI



# MANUAL TURN POP-UP

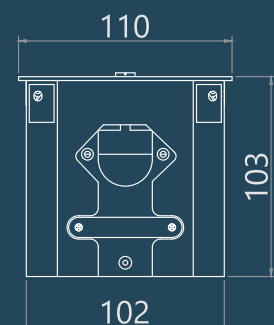
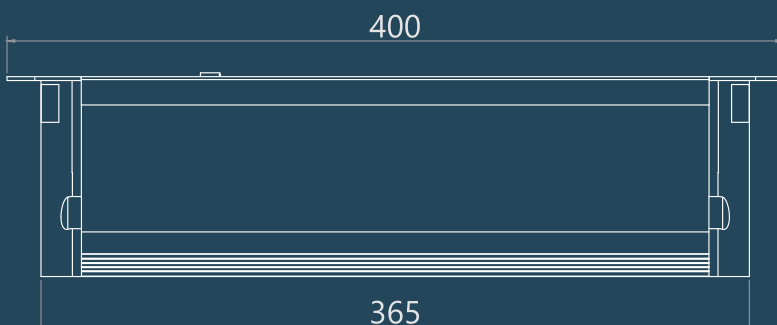
Manual Plug & Play (PnP) Pop-Up Boxes allows the installation processes to be adapted quickly & simply. Easy connection connectivity comes with pre-wired patch in - patch out cables. Simple turnaround function gives convenience to open and close the panel. Aluminum alloy material, suitable for a conference room & board room tables.



## SPECIFICATION :

Rated Voltage	: 250V~
Rated Current	: 6-13Amps (Max)
USB Charger	: Type A & C Ports 18W
Material	: Aluminum, Polycarbonate
Finish Colors	: Silver & Black (Anodized)
Wiring	: 3 x 1 mm <sup>2</sup> Cable 1.5 meter with 6 Amps Plug.
Multimedia	: Pre-connected cables
Standard Pack	: Mounting Hardware

MX Article No.	Universal Socket 6-13A	2 USB A + C 18W	Data Cat6	HDMI 4K	USB A Data	VGA 15 Pin	Aux 3.5	Silver	Black	Dimensions (mm)	Cutout (mm)
7001	3	1	2	1	1	1	1	Yes	-	400 x 110 x 103	370 x 104
7001A	3	1	2	1	1	1	1	-	Yes	400 x 110 x 103	370 x 104



# HYDRAULIC POP-UP

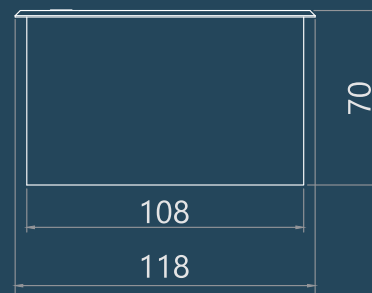
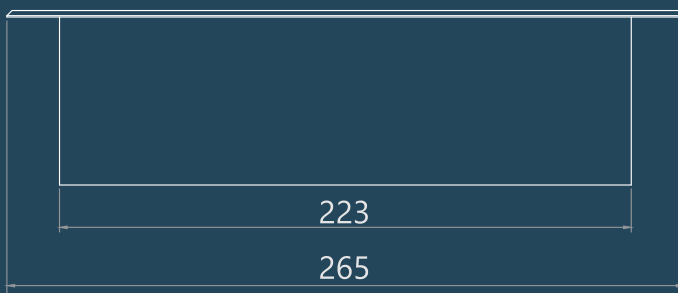
Hydraulic Plug & Play (PnP) Pop-Up Boxes allows the installation processes to be adapted quickly & simply. Easy connection connectivity comes with pre-wired patch in - patch out cables. Press button function gives convenience to open and close the panel. Aluminum alloy material, suitable for a conference room & small meeting room tables.



### SPECIFICATION :

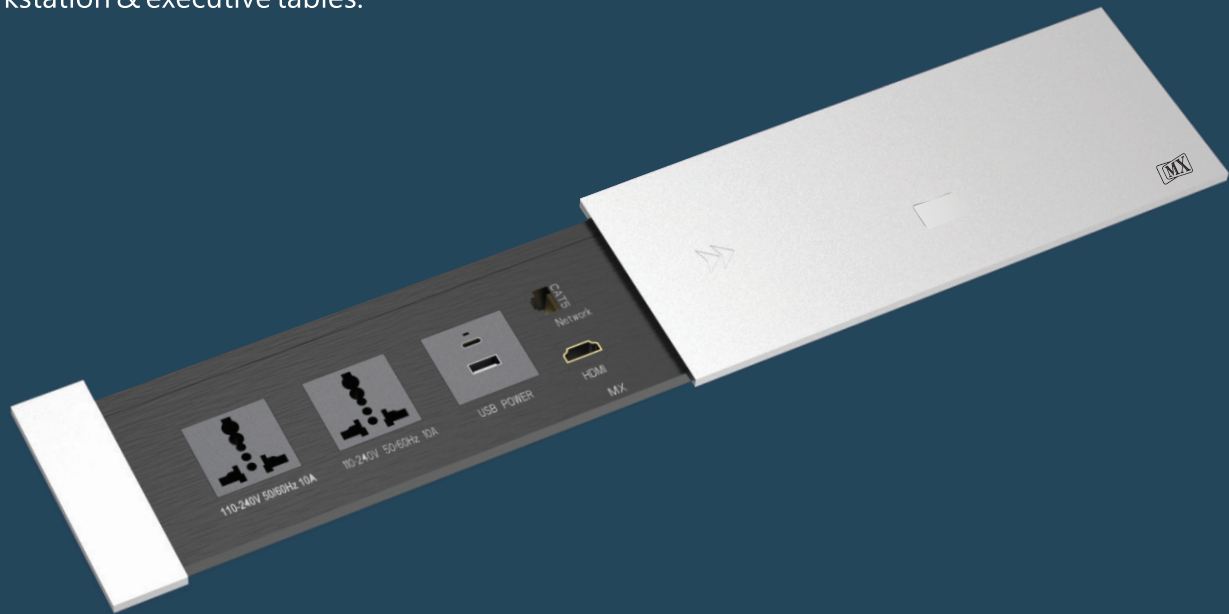
- Rated Voltage : 250V~
- Rated Current : 6-13Amps (Max)
- Material : Aluminium, Polycarbonate
- Finish Colors : Silver & Black (Anodized)
- Wiring : 3 x 1 mm<sup>2</sup> Cable 1.5 meter with 6 Amps Plug.
- Multimedia : Pre-connected cables

MX Article No.	Universal Socket 6-13A	2 USB A + C 18W	Data Cat6	HDMI 4K	USB A Data	VGA 15 Pin	Aux 3.5	Silver	Black	Dimensions (mm)	Cutout (mm)
7002	2	-	2	1	1	1	1	Yes	-	265 x 118 x 70	225 x 110
7002A	2	-	2	1	1	1	1	-	Yes	265 x 118 x 70	225 x 110



# POWER CUBBY SLIDER FLAP

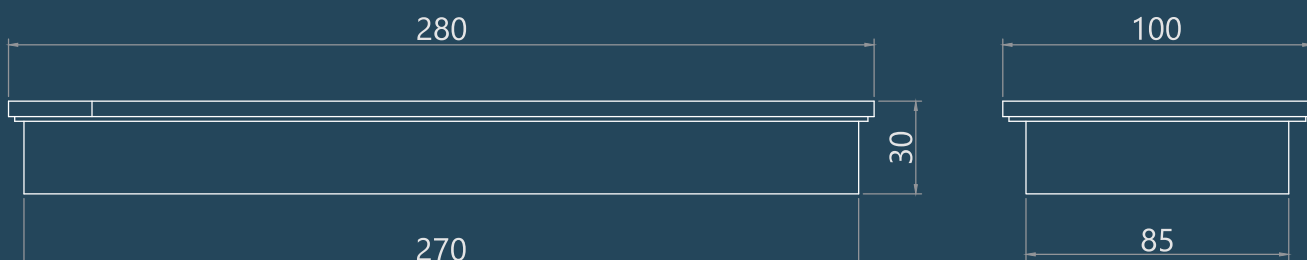
Power Cubby with Slider Flap allows the installation processes to be adapted quickly & simply. Easy power connection with shrouded screw terminals for power and feed-through multimedia connectivity. Sliding flap function gives convenience to open and close the panel. Aluminum alloy material, suitable for varieties of workstation & executive tables.



## SPECIFICATION :

Rated Voltage	: 250V~ Single Phase
Rated Current	: 6-13Amps (Max)
USB Charger	: Type C & A Ports 18W
Material	: Aluminium, Polycarbonate
Finish Colors	: Silver & Black (Anodized)
Wiring	: Screw-terminal & Feed-through Connectors

MX Article No.	Universal Socket 6/13A	USB A + C 18W	Data Cat	HDMI 4K	USB A Data	VGA 15 Pin	Aux 3.5	Silver	Black	Dimensions (mm)	Cutout (mm)
7005	2	1	1	1	-	-	-	Yes	-	280 x 100 x 30	275 x 72
7005A	2	1	1	1	-	-	-	-	Yes	280 x 100 x 30	275 x 72



# POWER CUBBY FLAP UP

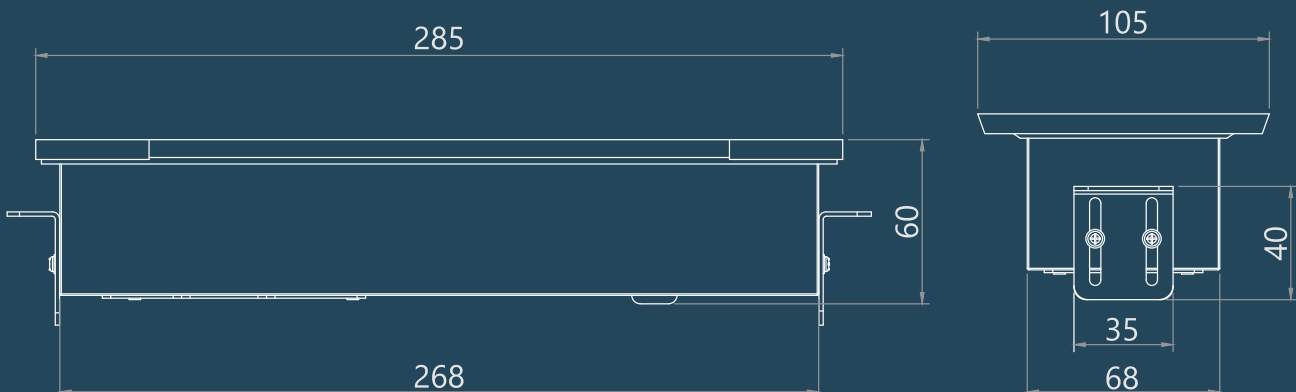
Power Cubby with Flap Up allows the installation processes to be adapted quickly & simply. Easy power connection with shrouded screw terminals for power and feed-through multimedia connectivity. Up flap function gives convenience to open and close the panel. Aluminum alloy material, suitable for varieties of workstation & executive tables.



## SPECIFICATION :

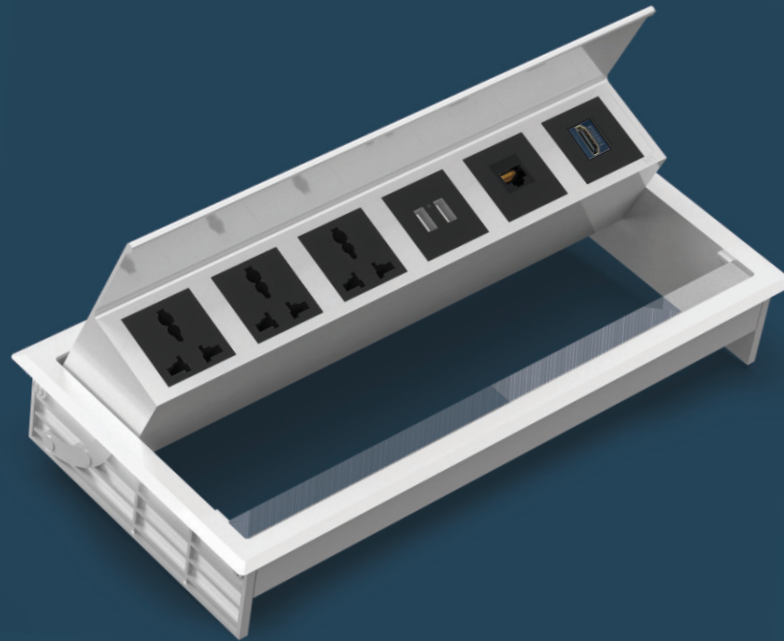
Rated Voltage	: 250V~Single phase
Rated Current	: 6-13Amps (Max)
USB Charger	: Type C & A 18W
Material	: Aluminium, Polycarbonate
Finish Colors	: Silver & Black (Anodized)
Wiring	: Screw-terminal & Feed-through Connectors

MX Article No.	Universal Socket 6-13A	USB A + C 18W	Data Cat6	HDMI 4K	USB A Data	VGA 15 Pin	Aux 3.5	Silver	Black	Dimensions (mm)	Cutout (mm)
7008	2	1	1	1	-	-	-	Yes	-	285 x 105 x 60	270 x 72
7008A	2	1	1	1	-	-	-	-	Yes	285 x 105 x 60	270 x 72



# POWER CUBBY FLAP-MELD SOCKETS

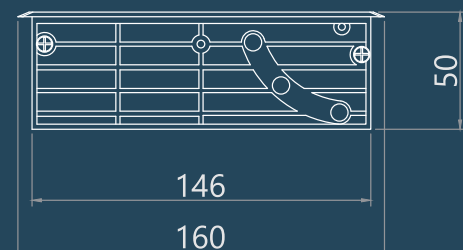
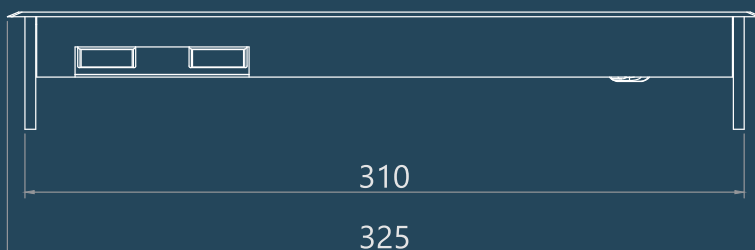
Power Flap with melded sockets, buffer damping, silent opening and closing, allows the installation processes to be adapted quickly & simply. Easy power connection with pre-wire power code and feed-through multimedia connectivity. Up flap function gives convenience to open-close the panel and also allows managing access cables. Aluminum alloy material, suitable for varieties of workstation & executive tables.



## SPECIFICATION :

Rated Voltage	: 250V~ Single Phase
Rated Current	: 6-13Amps (Max)
USB Charger	: 2 Type A 15W (5V, 3.1Amps)
Material	: Aluminium, Polycarbonate
Finish Colors	: Silver & Black (Anodized)
Wiring	: 3 x 1 mm <sup>2</sup> Cable 1.8 meter with 6 Amps Plug.
Customized	: Upon Request

MX Article No.	Universal Socket 6-13A	USB A 15W	Data Cat6	HDMI 4K	USB A Data	VGA 15 Pin	Aux 3.5	Silver	Black	Dimensions (mm)	Cutout (mm)
7009	3	2	1	1	-	-	-	Yes	-	325 x 160 x 50	310 x 148
7009A	3	2	1	1	-	-	-	-	Yes	325 x 160 x 50	310 x 148



# SOLO POWER MANAGER

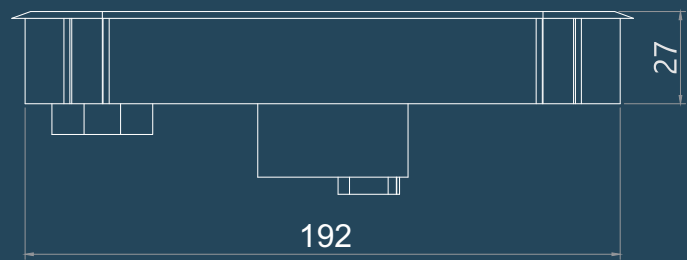
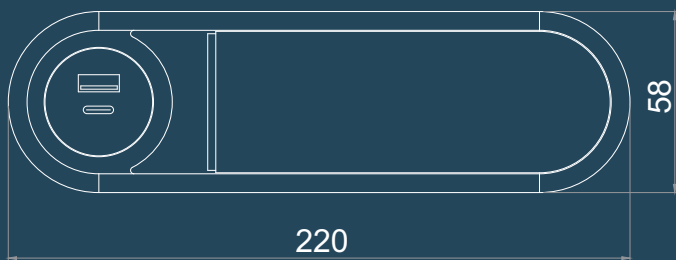
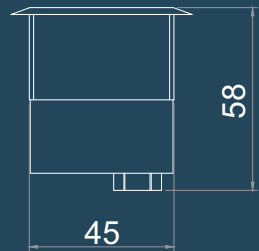
MX Solo Power Manger is a compact designed product for single electrical outlet and charging for electronic devices. This product delivers one universal electrical receptacle, USB A + C ports fast chargers 30W, Cat 6 and HDMI port for a solo user. Suitable for solo work space at home, office, studios, study table, bed side tables & leisure sofa, can be panel mounted to any surface.



Silver  
MX-7014A

**SPECIFICATION :**

- Rated Voltage : 250V~Single phase
- Rated Current : 6-13Amps (Max)
- USB Charger : A + C Ports 30W
- Material : Polycarbonate
- Finish Colors : Black & Silver
- Wiring : 3 x 1 mm<sup>2</sup> Cable 1.8 meter with 6 Amps Plug.
- Standard Pack : USB Adaptor
- Configuration : 1 Universal Socket , 1 USB A + C 30W Fast Charging, 1 Cat 6 & 1 HDMI
- Dimension : 220 X 58 X 45 MM
- Cutout Dimension : Cut Size - 192 X 47 (R-22.5)MM
- Customized : Upon Request



MX Article No.	Universal Socket 6-13A	2 USB A + C 30W	Data Cat OPTIONAL	HDMI 4K	Silver	Black	Dimensions (mm)	Cutout (mm)
7014	1	1	1	1		Yes	220 x 58 x 45	192 x 47
7014A	1	1	1	1	Yes		220 x 58 x 45	192 x 47

# FURNI NESTED POWER RECEPTACLES

MX Furni Nested Power Receptacles is designed to give you the power without disturbing your space design, a perfect solution for power and charging solutions for furniture. Surround frame with customized finish gives convenience to gel with the décor. The product delivers universal power sockets, fast charging C+ A ports PD 30W and Cat6 Data or HDMI ports as options.



**MX 7015**



**MX 7016**

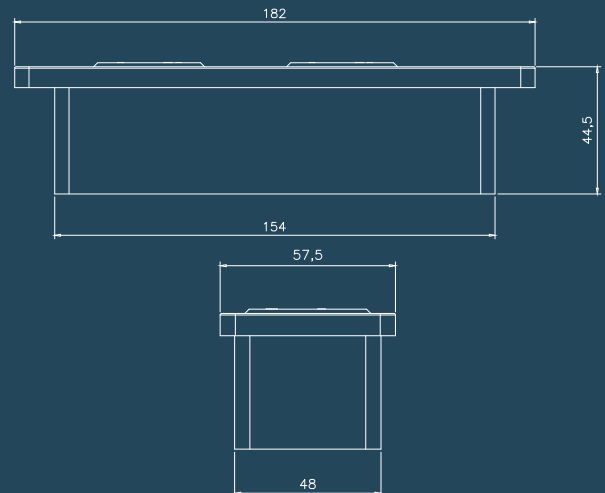


**MX 7017**



- Rated Voltage : 250V~Single Phase
- Rated Current : 10amps (Max)
- USB Charger : USB C+ A Ports PD 30W
- Material : Polycarbonate
- Finish Colors : Surround Frame – Black / Silver / Wooden
- Customized Finish : Available upon request
- Wiring : 3 x 1 mm<sup>2</sup> Pigtail Cable with Feedthrough Screw Connectors
- Standard pack : With Surround Plate
- Standard Configuration : 2 Universal Sockets & USB Charger  
C+A PD 30W, Cat 6 or HDMI (Optional)
- Dimension : 182mm x 57.5mm x 43mm
- Cutout Dimension : 156mm x 50mm

CUT-OUT SIZE - 156x50



MX Article NO.	Colors	Universal Socket 6-13A	USB A & C 30W	CAT 6 OR HDMI	Dimensions IN MM	Cut Size Dimensions IN MM
7015	RECEPTACLES BLACK	02	Yes	Yes	182 X 57.5 X 43	156 X 50
7016	RECEPTACLES WITH SILVER DECOR	02	Yes	Yes	182 X 57.5 X 43	156 X 50
7017	RECEPTACLES WITH WOODEN DECOR	02	Yes	Yes	182 X 57.5 X 43	156 X 50

**NOTE : CAT 6 OR HDMI PORT OPTIONAL**

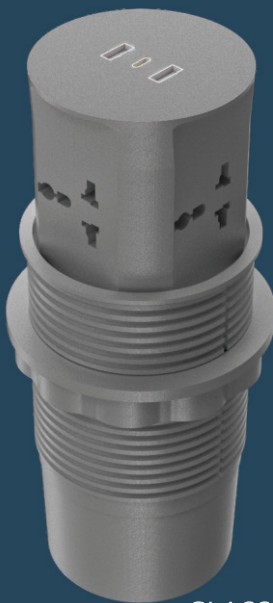
# FEATHER TOUCH LIGHT



# POWER POST PUSH-UP

# POWER POST PUSH-UP

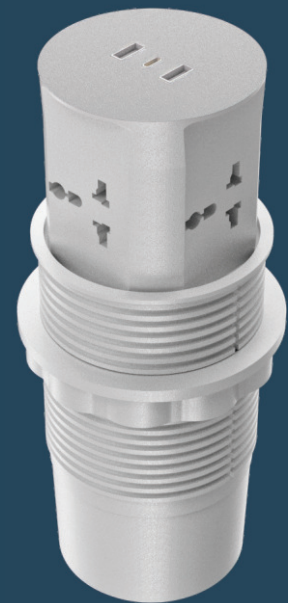
MX Power Post comes built in spring loaded pop up mechanism, simply push the top panel to pop the unit up for use. A unique product for electrical outlets and charging electronic devices, delivers 4 universal electrical receptacles, 2 USB A types 15W & 1 USB C type with power delivery 15 Watts. Compact retractable designed build in high grade engineered polycarbonate material; multi-function, ideal for charging multiple devices at home / office / commercial counters.



GLASS GRAY  
MX 7010



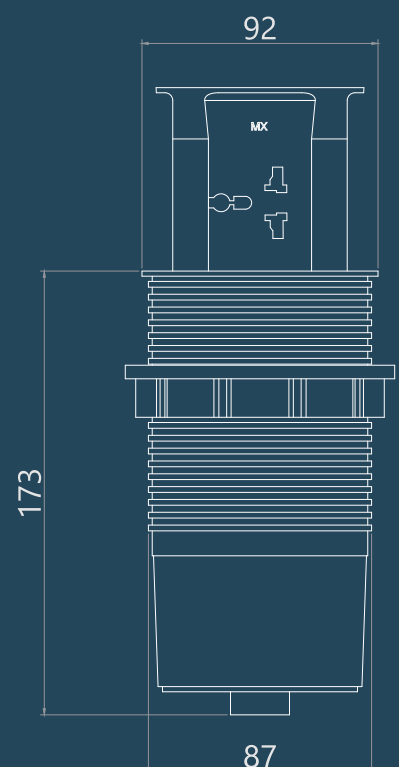
GLASS BLACK  
MX 7010A



GLASS WHITE  
MX 7010B

## SPECIFICATION :

Rated Voltage	: 250V~ Single Phase
Rated Current	: 6-13A
Universal Sockets	: 6/10/13Amps x 4
USB Charger	: 2 USB ports A type 15 Watts (Single Use)
USB Charger	: 1 USB ports C type 15 Watts (Single Use)
USB Volt/Current	: 5V/3.1Amps
Material	: Polycarbonate
Finish Colors	: Glass Silver Grey, Glass Black, Glass White
Wiring	: 3 x 1 mm <sup>2</sup> Cable 1.8 meter with 6 Amps Plug.
Standard pack	: Locking clasp ring.
Dimension	: Ø 92mm x 173mm
Cutout Dimension	: Ø 90mm



# POWER POST PUSH-UP WIRELESS

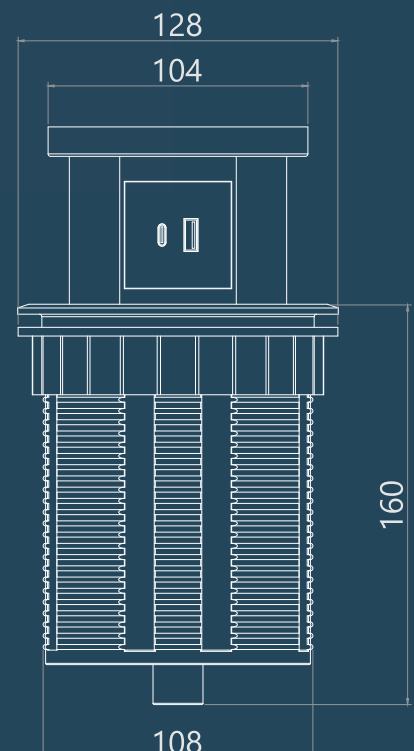
MX Power Post comes with a spring loaded pop up mechanism, simply push the top panel to pop the unit up for use. A unique product for electrical outlets and charging electronic devices, by using patch cord or wireless. The wireless feature is compatible with all devices that comply with Qi standards. This product delivers 3 universal electrical receptacles, 1 USB A type & 1 USB C type with power delivery 20 Watts and wireless charger on top with power delivery 15 Watts. Compact retractable designed build in high grade engineered polycarbonate material; multi-function, ideal for charging multiple devices at home / office / commercial counters.



GLASS BLACK  
MX 7011

## SPECIFICATION :

Rated Voltage	: 250V~ Single Phase
Rated Current	: 6-13A
Universal Sockets	: 6/10/13Amps x 3
USB Charger	: 1 USB ports A type 20 Watts (Single Use)
USB Charger	: 1 USB ports C type 20 Watts (Single Use)
Wireless Charger	: 15 Watts
Material	: Polycarbonate
Finish Colors	: Glass Black
Wiring	: 3 x 1 mm <sup>2</sup> Cable 1.5 meter with 6 Amps Plug.
Standard pack	: Locking clasp ring.
Dimension	: Ø 128mm x 160mm
Cutout Dimension	: Ø 110mm



# POWER POST TOUCH UP WIRELESS FEATHER TOUCH LIGHT

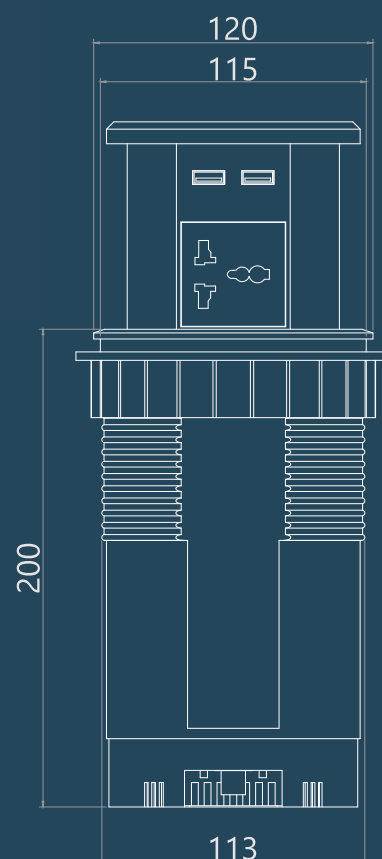
MX Power Post comes with a feather touch switch is a unique product for electrical outlets and charging electronic devices with patch cord or wireless. The wireless feature is compatible with all devices that comply with Qi standards. Simply figure touch the switch icon on the top panel to pop the unit up for use. Built in spring loaded pop up mechanism, delivers 4 universal electrical receptacles, 2 USB A type 3.0Amps & 2 USB C type with power delivery 30 Watts and wireless charger on top with power delivery 15 Watts. Compact retractable designed build in high grade engineered polycarbonate material; multi-function, ideal for charging multiple devices at home / office / commercial counters.



GLASS BLACK  
MX 7012

## SPECIFICATION :

Rated Voltage	: 250V~ Single Phase
Rated Current	: 6-13Amps (Max)
Universal Sockets	: 6/10/13Amps x 4
USB Charger	: 2 USB ports A type 20 Watts (Single Use)
USB Charger	: 2 USB ports C type 20 Watts (Single Use)
Wireless Charger	: 15 Watts
Material	: Polycarbonate
Finish Colors	: Glass Black
Wiring	: 3 x 1 mm <sup>2</sup> Cable 1.5 meter with 6 Amps Plug.
Standard pack	: Locking clasp ring.
Dimension	: Ø 120mm x 200mm
Cutout Dimension	: Ø 115mm



# HEXAD POWER CONSOLE

MX Hexad is a unique product for electrical outlets and charging electronic devices, by using patch cord or wireless. The wireless feature is compatible with all devices that comply with Qi standards. This product delivers 3/4/5 universal electrical receptacles, 1 USB A type & 1 USB C type with power delivery 30 Watts and wireless charger on top with power delivery 15 Watts. These power consoles are designed and built in high grade engineered polycarbonate material; multi-function and can be offered with a customizable logo. Suitable for multifunction desks, lab workstations, round meeting room, café tables, negotiating tables.

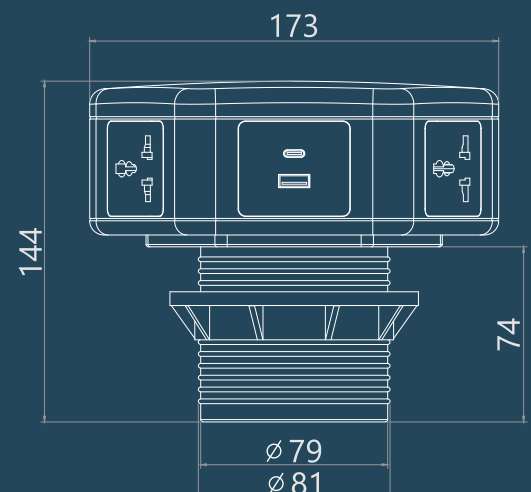
- ◆ Accurateness in dimensions
- ◆ Sturdy Construction
- ◆ Unmatched performance



### SPECIFICATION :

Rated Voltage	: 250V~ Single Phase
Rated Current	: 6-13Amps
USB Charger	: Type C & A 30W
Material	: Polycarbonate
Finish Colors	: Glass White-Black, Glass Black
Wiring	: 3 x 1 mm <sup>2</sup> Cable 1.8 meter with 6 Amps Plug.
Standard pack	: Locking clasp ring.
Dimension	: 173mm x 144mm
Cutout Dimension	: Ø 85mm

MX Article No.	Universal Socket 6-13A	USB A 3.0A USB C 30W PD	Top Wireless 15W	Data CAT6 Pre-Wired cable	HDMI 4K Pre-Wired cable
7013	5	1	-	-	-
7013A	5	1	1	-	-
7013B	4	1	-	2	-
7013C	4	1	1	2	-
7013D	3	1	-	2	1
7013E	3	1	1	1	1



# FURNI PUSH - UP MINI PUSH -UP WIRELESS

MX Power Post comes with a spring loaded pop up mechanism simply push the top panel to pop the unit up for use. A unique Product for charging electronic devices by using power supply. The wireless features is compatible with all device that comply with Qi standard. This product delivers USB A 15W and USB C 20W with power delivery 15 watts wireless charger on top. Compact retractable designed build in high grade engineered polycarbonate material; multi - function, ideal for charging multiple device at home & office .

- Hidden Charging
- Compatible with various device
- Fast Charging

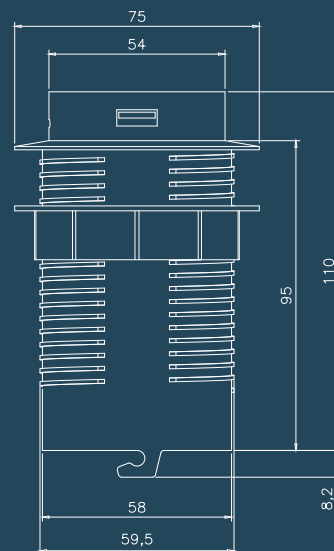


**MX 7018**

**SPECIFICATION :**

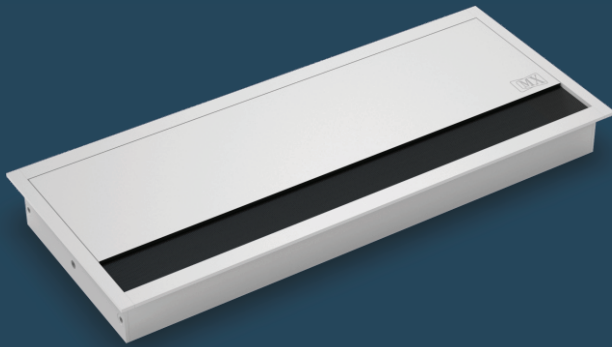
Rated Voltage	: 250V~Single Phase
USB Charger	: USB C 20W + A 18W Ports
Wireless Charger	: 15W
Material	: Polycarbonate
Finish Colors	: White
Wiring	: DC 24V (Max) 5.5 X 2.1 mm
Standard pack	: With Adaptor
Dimension	: Ø 75mm x 113 mm
Cutout Dimension	: Ø 62 mm

**CUT-OUT SIZE - Ø62 mm.**

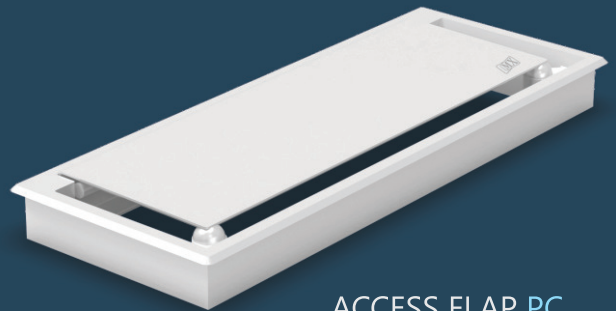


# ACCESS FLAPS

MX power access flaps with integral frame and cover plate, single side & dual side outlet accessible. Buffer damping, open and close silent, can be used with integrated and bottom box. Suitable for workstation, meeting room tables, conference table, executive table and class desk.



ACCESS FLAP SINGLE



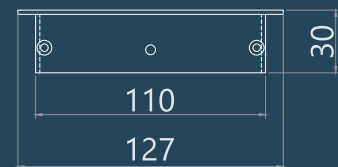
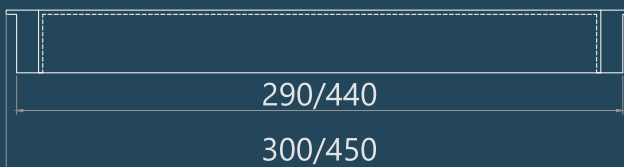
ACCESS FLAP PC



ACCESS FLAP DOUBLE

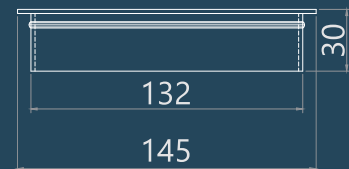
## ACCESS FLAP SINGLE

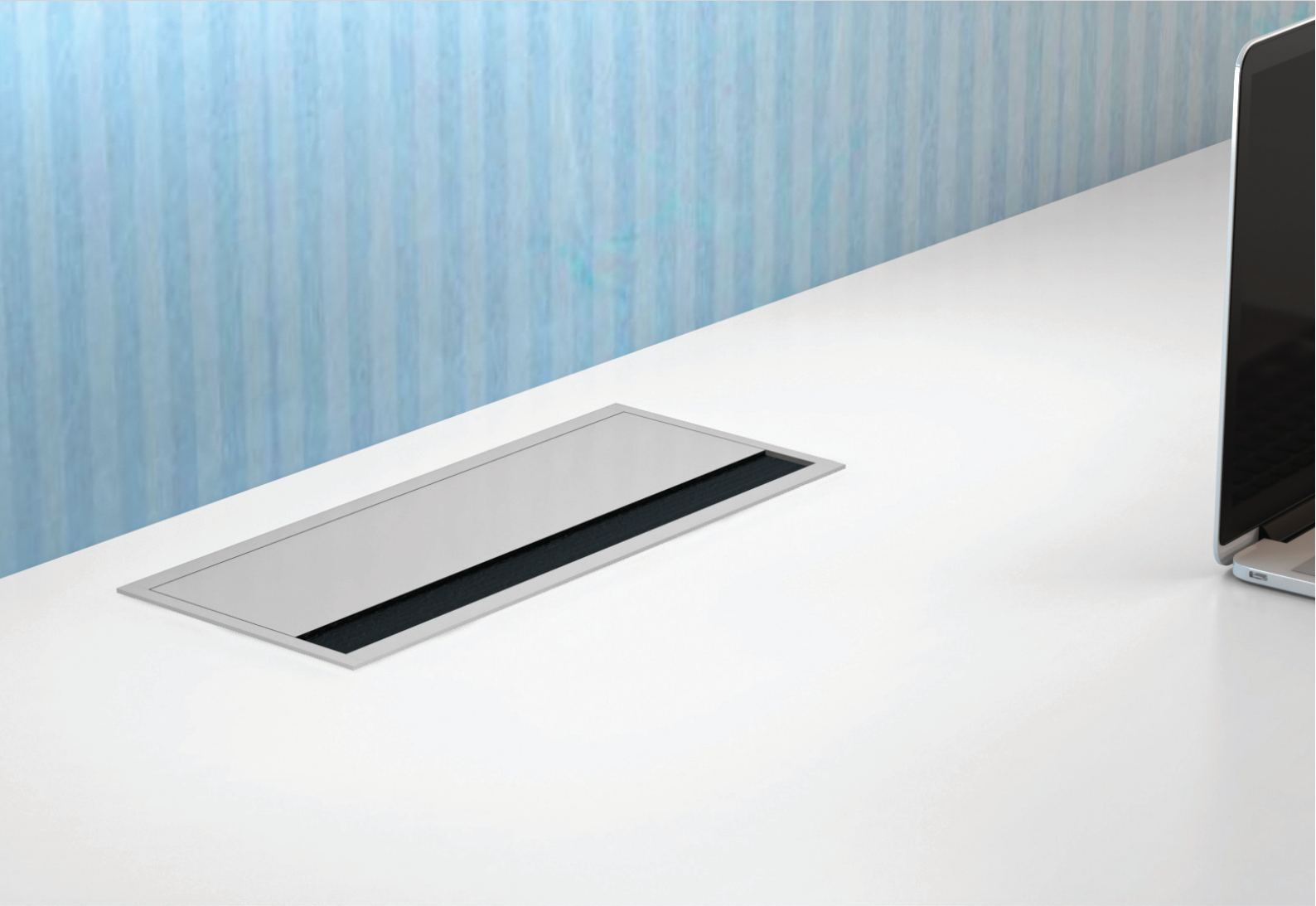
MX-7003/A/B  
MX-7004/A/B



## ACCESS FLAP DOUBLE

MX-7006  
MX-7006 A

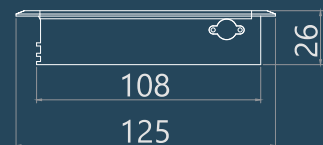
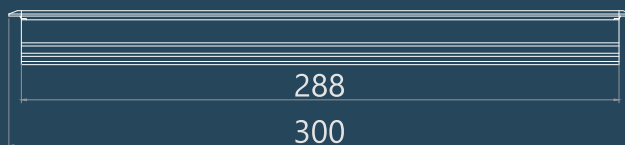




MX Article No.	Size	Dimensions (in MM)	Cut Out (in MM)	AL	PC	Silver	Black	White
7003	300mm	300 x 127 x 30	290 x 110	Yes	-	Yes	-	-
7003 A	300mm	300 x 127 x 30	290 x 110	Yes	-	-	Yes	-
7003 B	300mm	300 x 127 x 30	290 x 110	Yes	-	-	-	Yes
7004	450mm	450 x 127 x 30	440 x 110	Yes	-	Yes	-	-
7004 A	450mm	450 x 127 x 30	440 x 110	Yes	-	-	Yes	-
7004 B	450mm	450 x 127 x 30	440 x 110	Yes	-	-	-	Yes
7006	300mm	300 x 145 x 30	290 x 135	Yes	-	Yes	-	-
7006 A	450mm	450 x 145 x 30	440 x 135	Yes	-	Yes	-	-
7007	300mm	300 x 125 x 26	290 x 110	-	Yes	Yes	-	-
7007 A	300mm	300 x 125 x 26	290 x 110	-	Yes	-	Yes	-
7007 B	300mm	300 x 125 x 26	290 x 110	-	Yes	-	-	Yes

ACCESS FLAP PL

MX-7007/A/B



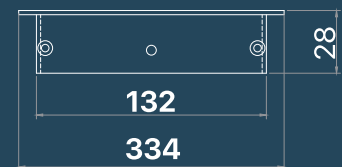
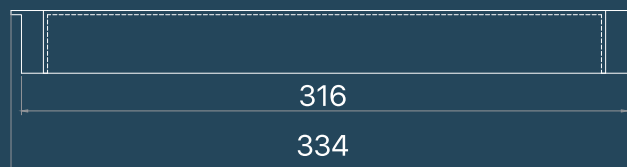
# ACCESS FLAPS

MX power access flaps with integral frame and cover plate with single side outlet accessible can be used with an integrated bottom box. USB charging ports on the side cap gives convenience for charging electronic devices. Suitable for workstation, meeting room tables, conference table, supervisor table and class desk.



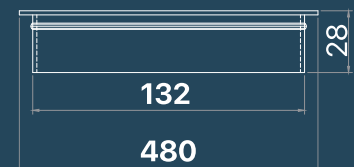
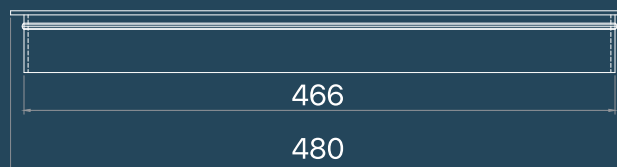
ACCESS FLAP SINGLE

**MX-7019/20/21/22**



ACCESS FLAP SINGLE

**MX-7023/24/25/26**



Customized : Upon Request



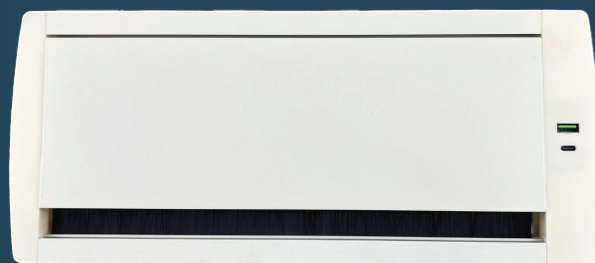
ACCESS FLAP WITH GASKET



ACCESS FLAP WITH BRUSH



ACCESS FLAP WITH GASKET  
1 USB A + 1 USB C 30W PD

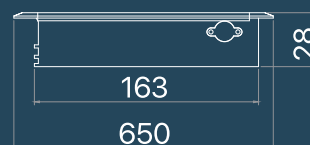
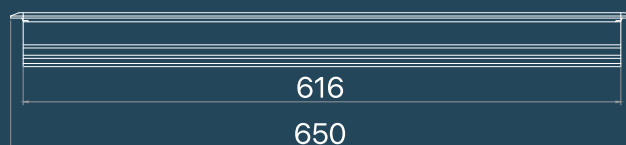


ACCESS FLAP WITH BRUSH  
1 USB A + 1 USB C 30W PD

MX Article No.	Size (IN MM)	Dimensions (in MM)	Cut Out (in MM)	AL	Silver	Black	White
7019	300	334 X 150 X 28	316 X 132	Yes	Yes	Yes	Yes
7020	300	334 X 150 X 28	316 X 132	Yes	Yes	Yes	Yes
7021	300	345 X 150 X 28	316 X 132	Yes	Yes	Yes	Yes
7022	300	345 X 150 X 28	316 X 132	Yes	Yes	Yes	Yes
7023	450	480 X 150 X 28	466 X 132	Yes	Yes	Yes	Yes
7024	450	480 X 150 X 28	466 X 132	Yes	Yes	Yes	Yes
7025	450	495 X 150 X 28	466 X 132	Yes	Yes	Yes	Yes
7026	450	495 X 150 X 28	466 X 132	Yes	Yes	Yes	Yes
7027	600	640 X 150 X 28	616 X 163	Yes	Yes	Yes	Yes
7028	600	640 X 150 X 28	616 X 163	Yes	Yes	Yes	Yes
7029	600	650 X 150 X 28	616 X 163	Yes	Yes	Yes	Yes
7030	600	650 X 150 X 28	616 X 163	Yes	Yes	Yes	Yes

ACCESS FLAP PL

MX-7027/28/29/30

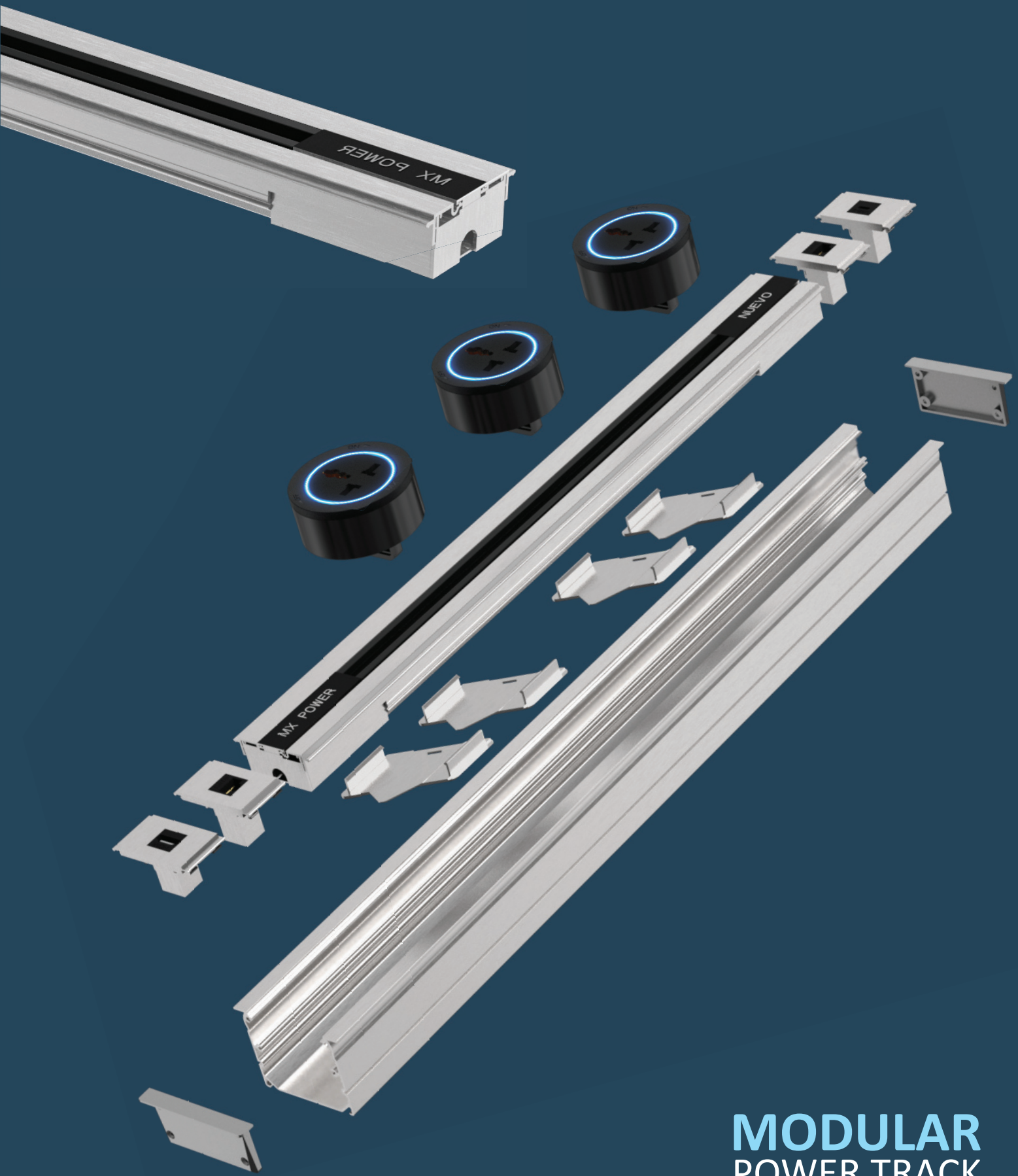




CONNECTING THE FUTURE

# MX NUEVO C55

## IN-SURFACE POWER & DATA TRACK INSTALLATION



# MODULAR POWER TRACK



CONNECTING THE FUTURE



# NEXT GEN SOLUTION

# Get in Touch with Us

---

## Contact Us:

**Mr. Laxmikant Laddha:** 09822332340

**Giriraj Laddha:** 09881245431

**Rahul Laddha:** 09881245432

 [sales@rajelectricals.co.in](mailto:sales@rajelectricals.co.in)

 <https://rajelectricals.co.in/>

## Lighting Store:

583, Narayan Peth, Jaldhara Society,  
Near Kanyashala, Pune-411030

**Phone:** (020) 24455293, 24461156,  
24481583, 24486306, 24492424

## Electrical Store:

353/2, Shaniwar Peth, Ramanbaug  
Co-operative Hsg Society, Near  
Ramanbaug School, Pune-411030.

**Phone:** 098812 45432

 [rajelectricalspune](https://www.facebook.com/rajelectricalspune)

 [raj\\_\\_electricals](https://www.instagram.com/raj__electricals)